

Prepared By: Koby Willis & Dallas Sylvester



Comprehensive Annual Financial Report for Piute County School District

*500 North Main
Junction, UT 84740
(435) 577-2912*

For Fiscal Year Ended June 30, 2021

Board of Education

Jeremy Pearson: Board President
Teresa Morgan: Board Vice-President
Rick Dalton: Board Member
Erin Jensen: Board Member
Neccia Dalton: Board Member

This Page Left Intentionally Blank

Table of Contents

Introductory Section	1-7
Letter of Transmittal	1
Organizational Chart.....	5
Elected & Appointed Officials.....	6
Precincts of the Board of Education	7
Financial Section	8-63
Independent Auditors Report	8
Management’s Discussion and Analysis.....	10
Basic Financial Statements	
Government-Wide Financial Statements	
Statement of Net Position	17
Statement of Activities.....	18
Fund Financial Statements	
Balance Sheet - Governmental Funds.....	19
Reconciliation of the Balance Sheet of Governmental Funds to the Statement of Net Position.....	20
Statement of Revenues, Expenditures, and Changes in Fund Balances - Governmental Funds	21
Reconciliation of the Statement of Revenues, Expenditures, and Changes in Fund Balances of Governmental Funds to the Statement of Activities	22
Statement of Revenues, Expenditures, and Changes in Fund Balances - Budget and Actual - General Fund	23
Notes to the Basic Financial Statements	24
Required Supplementary Information:	
Schedule of Proportionate Share of the Net Pension Liability (Asset).....	51
Schedule of District Contributions	52
Notes to Required Supplementary Information.....	53
Combining and Individual Fund Statements and Schedules:	
Combining Balance Sheet - Non major Governmental Funds	55
Combining Statement of Revenues, Expenditures and Changes in Fund Balances - Non Major Governmental Funds.....	56
Schedule of Revenues, Expenditures and Changes in Fund Balances - Budget & Actual - School Lunch - Non Major Special Revenue Fund.....	57
Schedule of Revenues, Expenditures and Changes in Fund Balances - Budget & Actual - Student Activity Fund - Non Major Special Revenue Fund.....	58
Schedule of Revenues, Expenditures and Changes in Fund Balances - Budget & Actual - Municipal Building Authority - Non Major Special Revenue Fund.....	59

Schedule of Revenues, Expenditures and Changes in Fund Balances - Scholarship Fund - Non Major Special Revenue Fund.....	60
Schedule of Revenues, Expenditures and Changes in Fund Balances - Budget & Actual - Debt Service Fund - Major Debt Service Fund.....	62
Schedule of Revenues, Expenditures and Changes in Fund Balances - Budget & Actual - Major Capital Projects Fund	63

Statistical Section.....64-71

Comparative Statements of Net Position.....	64
Net Position By Component.....	65
Changes in Net Position	66
Fund Balances, Governmental Funds	67
Changes in Fund Balances, Governmental Funds	68
Revenue by Source, General Fund	69
Expenditures by Function, General Fund	70
Property Taxes (Per \$1): Direct and overlapping Governments	71

Compliance Section72-75

Independent Auditors Report:	
Internal Control Over Financial Reporting And On Other Matters.....	72
Compliance With General State Compliance Requirements	74



Introductory Section

Pages 1 - 7

Letter of Transmittal:1-4

This executive letter is a narrative introduction to the report. The letter describes the profile of the district, major initiatives, the current economic background and relevant financial policies.

Organizational Chart:5

This chart provides a general view of the District organizational structure.

Elected and Appointed Officials:6

This list provides the names, positions and terms of elected and appointed officials within the District.

Precincts of the Board of Education:7

This map provides the boundaries and precinct numbers of the five precincts for members of the Board of Education in the District.

This Page Left Intentionally Blank



June 30, 2021

To the Members of the Piute County School District Board of Education and the Citizens of Piute County:

We are pleased to present Piute County School District's Comprehensive Annual Financial Report (CAFR) for the fiscal year ended June 30, 2021. This report is published to provide citizens, entities and other interested parties with both financial and non-financial information. This report is also intended to support the District's mission to develop responsible, productive citizens through a progressive education system that emphasizes self-worth and expectations of social and academic excellence while preserving community values.

Utah law requires that Piute County School District (the District) publish within 5 months of the close of each fiscal year a complete set of financial statements. These statements are to be presented in conformity with generally accepted accounting principals (GAAP) in the United States of America, and are audited by a licensed firm of certified public accountants in accordance with auditing standards generally accepted in the United States of America and the standards applicable to financial audits contained in *Government Auditing Standards*, issued by the Comptroller of the United States.

Internal Controls

Management assumes full responsibility for the completeness and reliability of all information presented in this report. To provide a reasonable basis for making these representations, management of the District has established a framework of internal controls to protect the District's assets from loss, theft, or misused to compile sufficiently reliable information for the preparation of the District's financial statements in conformity with GAAP.

The cost of internal controls should not outweigh their benefits, and consequently, the District's internal controls have been designed to provide reasonable, rather than absolute, assurance that the financial statements will be free from material misstatement. As management, we assert that, to the best of our knowledge and belief, this financial report is complete and reliable in all material respects.

Independent Audit

Gilbert & Stewart, a firm of licensed certified public accountants, has audited the District's financial statements. The goal of the independent audit is to provide reasonable assurance that the financial statements of the District for the year ended June 30, 2021, are free of material misstatement.

The independent auditor's report can be found as the first component of the *Financial Section* of this CAFR.

District Profile

Piute County School District is one of 41 school districts in the state of Utah. Student enrollment for the 2020 - 2021 school year was 291 as of October 1, 2020. The district provides educational services for those within the boundaries of the district's schools. As of June 2021, Piute County School District services a 7 -12 high school and two K - 6 elementary schools.

The district also offers several educational alternatives outside the traditional school setting. These alternatives include preschool training at both elementary schools, an adult education program, a comprehensive career and technical education program and concurrent enrollment classes that allow students to earn both high school and college credits. The district offers a music program and special education program at all three schools. In addition, the district offers a variety of other programs both extra curricular and curriculum related.

Piute County School District is a legally separate entity enjoying all rights and privileges accorded political subdivisions in the State of Utah. The district is fiscally independent. Policy making and legislative authority are vested in the Board of Education, which in accordance with Utah Code 20A-14-202-1a, is comprised of five members. The Board of Education represents the Piute County citizenry and is elected from precincts which have been independently determined by Piute County. A map of the precinct boundaries is included in this report. The Board of Education is elected locally on a non-partisan basis. Board members serve four-year terms on a staggered basis.

The Board of Education is responsible, among other things, for developing policy, adopting the annual budget, levying property taxes, incurring bonded debt, and appointing both superintendent and business administrator. The superintendent and business administrator are responsible for carrying out the policies of the Board of Education and overseeing the day-to-day operations of the District.

During FY21, the District employed 35 full-time employees and 83 part-time employees including 30 Classroom Teachers, 3 Administrators & Directors, 6 Custodial & Maintenance, 6 Secretaries, 6 Transportation Services, 18 Paraprofessionals, 6 Child Nutrition Services, 36 Coaches & Substitutes, 3 student interns and 5 Board Members.

Economic Indicators

State Economy: The Utah Economic reported in the 2020 Economic Report that the number of total jobs in Utah decreased by 22,100 in 2020.. Utah is still ranked among the highest states for job growth. Average annual pay increased by 3.3% and personal income by 6%.

Utah now has 3.27 million residents as of July 2020 as estimated by the Utah Population Committee (UPC).

On October 1, 2020, there were an estimated 666,609 students in Utah's public education system; a decrease of 794 students from October 1, 2019.

Local Economy: Piute County population estimates were at 1,726 for July 2020. That's up 0.8% from the 2019 estimate (Utah Economic Report 2020). Piute County was the only county in the state to experience per capita personal income decline in 2019. The per capita income declined by 0.7% in Piute County in 2019.

Student Enrollment

Piute County School District fall enrollment for the 2019 - 2020 school year was 291. That's up 12 students from 2019 - 2020, up 18 students from 2018 - 2019, and down 63 students from 1999-2000.

Revenues

The District is heavily reliant on State aid as it provided 80% of general fund revenue for 2020-2021. Federal sources of revenue are at 7.3% of the General Fund.

The State's fiscal year 2021 school finance program was designed to provide every school district with a basic operation program of \$3,596 per weighted pupil unit (WPU). This amount increased from \$3,532 in 2020. The Utah State Uniform Fund was constitutionally established in 1938 and is used to allocate funding for statewide public education programs. Since 1947, all Utah taxes based on income have been required to be used for public education. In 1996, voters in Utah approved a change providing that these revenues could also be used for higher education. Additionally, a statewide property tax rate is levied to finance the Uniform School Fund and is applied against the taxable value of real and personal property.

Local property taxes were 10.3% of general fund revenue in 2021 which is up 0.3% from 2020. Local property taxes as a percentage of General Fund revenues are nearly identical to the 10 year average of 9.9%.

Budgetary Control

The District adopts an annual budget for revenues and expenditures. This budget serves as the financial operating plan for the entire fiscal year. Revisions may be implemented during the year. All annual appropriations lapse at fiscal year-end with the exception of those indicated as a fund balance reserve.

Each June, the District Business Administrator submits to the board a proposed operating budget for the next fiscal year, commencing July 1st. This budget includes proposed expenditures and the means of financing them.

On or before June 30th of each year, the Board of Education legally adopts, by resolution, its budget for the next fiscal year, after receiving taxpayer input. If the District exceeds the certified tax rate, a revised budget is adopted in August through the truth-in-taxation process.

In developing its budget, the District strives to estimate revenues and expenditures as accurately as possible. The level by which expenditures may not exceed appropriations has been interpreted by the State Superintendent of Public Instruction to be the total budgeted revenue of a given fund.

Major Initiatives / Capital Projects

All three current school buildings were constructed during the 1960's and Piute High School underwent a significant remodel and reconstruction in 2010. Though the elementary school buildings are old, they have been kept in good repair and District staff strives to maintain the buildings at a high level. The District continually makes needed repairs and renovations with annual reviews and requests of capital projects. Procurement of capital projects above \$50,000 are approved by the Board of Education as required by state law and District policy.

Long Term Financial Planning

In November 2017 Piute County residents approved a rate increase in the Local Voted Levy and corresponding decrease in the Local Board Levy. This resulted in a large increase in state guarantees for FY19. It is not expected revenues will increase significantly in the following years and will subsequently continue to be conservative in all budgeting processes and inasmuch as possible, to not use one-time funding sources for on-going expenditures.

The District holds a quarterly finance and internal audit committee meeting to discuss long term and short term financial goals for the school district. The committee reviews building capital project needs and student enrollment projections to make recommendations for possible budget changes.

Acknowledgments

We would like to acknowledge school administrators, secretaries, and the many other employees in the district who play a vital role in the management, accurate processing, and timely closing of the District's financial records.

Respectfully submitted.



Koby S. Willis, M.B.A.
Superintendent



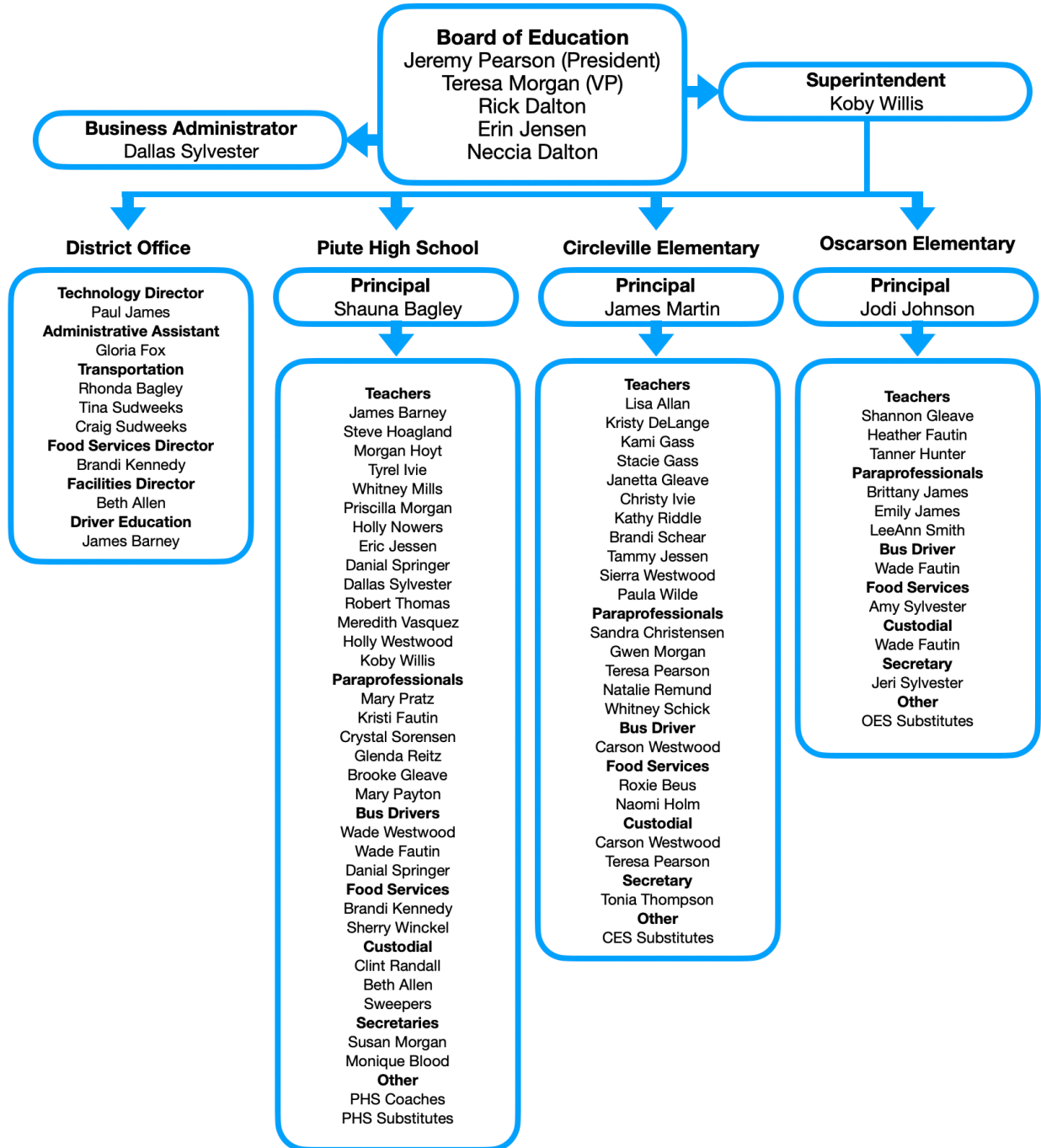
Dallas Sylvester
Business Administrator



PIUTE COUNTY SCHOOL DISTRICT
 PREPARING CHILDREN FOR THE FUTURE

Organizational Chart

Approved 2/13/18
 Names Last Updated 6/8/21



Piute County School District

Elected & Appointed Officials

June 30, 2021

Elected Officials*

Board of Education	Current Term Start Date	Current Term End Date	Initial Appointment
Erin Jensen Precinct #1	January 7, 2019	January 2, 2023	January 1, 2007
Teresa Morgan <i>Board Vice-President</i> Precinct #2	January 7, 2019	January 2, 2023	January 5, 2015
Rick Dalton Precinct #3	January 7, 2019	January 2, 2023	January 2, 1995
Jeremy Pearson <i>Board President</i> Precinct #4	January 4, 2021	January 7, 2025	January 2, 2017
Neccia Dalton Precinct #5	January 4, 2021	January 7, 2025	January 4, 2021

Appointed Officials**

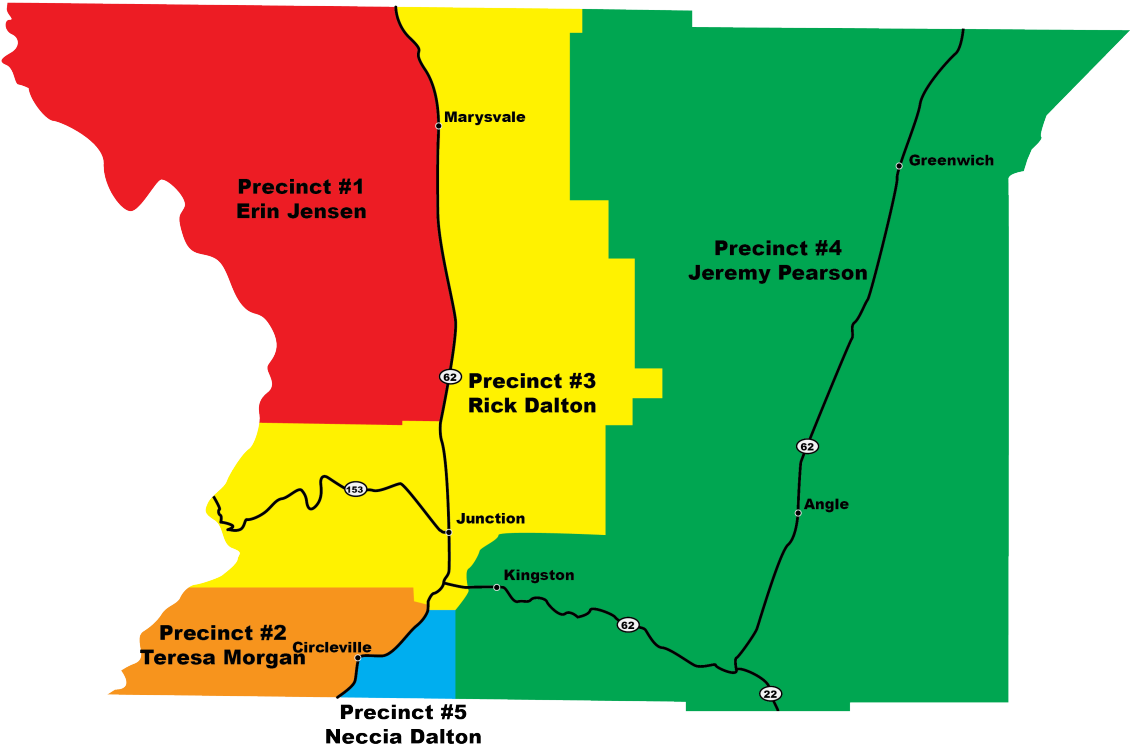
Koby Willis <i>Superintendent</i>	July 1, 2020	June 30, 2022	July 1, 2020
Dallas Sylvester <i>Business Administrator</i>	July 1, 2020	June 30, 2022	July 1, 2020

*The term of office for a board member is four years, beginning on the first Monday in January following the November election.

**The term of office of the Superintendent and Business Administrator is two years

Piute County School District

School Board Member Precincts



This Page Left Intentionally Blank



Financial Section

Pages 8 - 63

Independent Auditor’s Report:8-9

This independent auditor’s report describes the audit, the nature and scope of the audit, and the auditor’s opinion.

Management’s Decision and Analysis:.....10-16

This information provides management’s explanations regarding the District’s overall financial performance throughout the fiscal year and it’s fiscal position.

The Basic Financial Statements:17-23

These financial statements provide required detailed information regarding the District’s financial performance and position.

Notes to the Basic Financial Statements:24-53

Detailed explanations to further clarify information contained in the basic financial statements.

Combining and Individual Fund Financial Statements: 54-63

These financial statements and schedules are supplementary information intended to clarify information presented in the basic financial statements.



GILBERT & STEWART
CERTIFIED PUBLIC ACCOUNTANTS
A PROFESSIONAL CORPORATION
ESTABLISHED 1974

RANDEL A. HEATON, CPA
LYNN A. GILBERT, CPA
JAMES A. GILBERT, CPA
BEN H. PROBST, CPA
RONALD J. STEWART, CPA
SIDNEY S. GILBERT, CPA
JAMES E. STEWART, CPA

INDEPENDENT AUDITOR'S REPORT

To the Board of Education
Piute County School District
Junction, Utah

Report on the Financial Statements

We have audited the accompanying financial statements of the governmental activities, each major fund, and the aggregate remaining fund information of Piute County School District, (the District) as of and for the year ended June 30, 2021, and the related notes to the financial statements, which collectively comprise the District's basic financial statements as listed in the table of contents.

Management's Responsibility for the Financial Statements

Management is responsible for the preparation and fair presentation of these financial statements in accordance with accounting principles generally accepted in the United States of America; this includes the design, implementation, and maintenance of internal control relevant to the preparation and fair presentation of financial statements that are free from material misstatement, whether due to fraud or error.

Auditor's Responsibility

Our responsibility is to express opinions on these financial statements based on our audit. We conducted our audit in accordance with auditing standards generally accepted in the United States of America and the standards applicable to financial audits contained in *Government Auditing Standards*, issued by the Comptroller General of the United States. Those standards require that we plan and perform the audit to obtain reasonable assurance about whether the financial statements are free from material misstatement.

An audit involves performing procedures to obtain audit evidence about the amounts and disclosures in the financial statements. The procedures selected depend on the auditor's judgment, including the assessment of the risks of material misstatement of the financial statements, whether due to fraud or error. In making those risk assessments, the auditor considers internal control relevant to the entity's preparation and fair presentation of the financial statements in order to design audit procedures that are appropriate in the circumstances, but not for the purpose of expressing an opinion on the effectiveness of the entity's internal control. Accordingly, we express no such opinion. An audit also includes evaluating the appropriateness of accounting policies used and the reasonableness of significant accounting estimates made by management, as well as evaluating the overall presentation of the financial statements.

We believe that the audit evidence we have obtained is sufficient and appropriate to provide a basis for our audit opinions.

Opinions

In our opinion, the financial statements referred to above present fairly, in all material respects, the respective financial position of the governmental activities, each major fund, and the aggregate remaining fund information of Piute County School District, as of June 30, 2021 and the respective changes in financial position thereof and the budgetary comparison for the general fund for the year then ended in accordance with accounting principles generally accepted in the United States of America.

Other Matters

Required Supplementary Information

Accounting principles generally accepted in the United States of America require that the management's discussion and schedules related to pensions be presented to supplement the basic financial statements. Such information, although not a part of the basic financial statements, is required by the Governmental Accounting Standards Board, who considers it to be an essential part of financial reporting for placing the basic financial statements in an appropriate operational, economic, or historical context. We have applied certain limited procedures to the required supplementary information in accordance with auditing standards generally accepted in the United States of America, which consisted of inquiries of management about the methods of preparing the information and comparing the information for consistency with management's responses to our inquiries, the basic financial statements, and other knowledge we obtained during our audit of the basic financial statements. We do not express an opinion or provide any assurance on the information because the limited procedures do not provide us with sufficient evidence to express an opinion or provide any assurance.

Other Information

Our audit was conducted for the purpose of forming opinions on the financial statements that collectively comprise the District's basic financial statements. The introductory section, combining and individual nonmajor fund financial statements, and the statistical section are presented for purposes of additional analysis and are not a required part of the basic financial statements.

The combining and individual nonmajor fund financial statements are the responsibility of management and were derived from and relate directly to the underlying accounting and other records used to prepare the basic financial statements. Such information has been subjected to the auditing procedures applied in the audit of the basic financial statements and certain additional procedures, including comparing and reconciling such information directly to the underlying accounting and other records used to prepare the basic financial statements or to the basic financial statements themselves, and other additional procedures in accordance with auditing standards generally accepted in the United States of America. In our opinion, the combining and individual nonmajor fund financial are fairly stated in all material respects in relation to the basic financial statements as a whole.

The Introductory and statistical sections have not been subjected to the auditing procedures applied to the audit of the basic financial statements, and accordingly we do not express an opinion or provide any assurance on them.

Other Reporting Required by *Government Auditing Standards*

In accordance with *Government Auditing Standards*, we have also issued our report dated November 23, 2021, on our consideration of the District's internal control over financial reporting and on our tests of its compliance with certain provisions of laws, regulations, contracts, and grant agreements and other matters. The purpose of that report is to describe the scope of our testing of internal control over financial reporting and compliance and the results of that testing, and not to provide an opinion on internal control over financial reporting or on compliance. That report is an integral part of an audit performed in accordance with *Government Auditing Standards* in considering the District's internal control over financial reporting and compliance.

Gilbert & Stewart

GILBERT & STEWART, CPA, PC
November 23, 2021

**Piute County School District
Management's Discussion And Analysis
June 30, 2021**

As management of the Piute County School District (District), we offer readers of the District's financial statements this narrative discussion, overview, and analysis of the financial activities of the District for the fiscal year ending June 30, 2021. We encourage readers to consider the information presented here in conjunction with the District's financial statements, which follow this section.

Overview of Financial Statement

This discussion and analysis is intended to serve as an introduction to the District's basic financial statements. The District's basic financial statements comprise three components: 1) government-wide financial statements, 2) fund financial statements, and 3) notes to the financial statements. This report also contains other supplementary information in addition to the basic financial statements themselves.

Government-Wide Financial Statements

The *government-wide financial statements* are designed to provide readers with a broad overview of the District's finances, in a manner similar to a private-sector business. The government-wide financial statements include the statement of net position and the statement of activities.

The *statement of net position* presents information on all of the assets and liabilities of the District, with the difference between the two reported as net position. Over time, increases or decreases in net position may serve as a useful indicator of whether the financial position of the District is improving or deteriorating.

The *statement of activities* presents information showing how the net position of the District changed during the fiscal year. All changes in net position are reported as soon as the underlying event giving rise to the change occurs, regardless of the timing of related cash flows. Thus, revenues and expenditures are reported in this statement for some items that will only result in cash flows in future fiscal periods (e.g., uncollected taxes and earned but unused vacation leave).

The government-wide financial statements can be found on pages 18 through 19 of this report.

Fund Financial Statements

A *fund* is a group of related accounts that is used to maintain control over resources that have been segregated for specific activities or objectives. The District, like other state and local governments, uses fund accounting to ensure and demonstrate compliance with finance-related legal requirements. All of the funds of the District can be divided into two categories, governmental funds and fiduciary funds.

Governmental funds are used to account for essentially the same functions reported as governmental activities in the government-wide financial statements. However, unlike the

**Piute County School District
Management's Discussion And Analysis
June 30, 2021**

government-wide financial statements, governmental fund financial statements focus on near-term inflows and outflows of spendable resources, as well as on balances of spendable resources available at the end of the fiscal year. Such information may be useful in evaluating the District's near-term financing requirements.

Because the focus of governmental funds is narrower than that of the government-wide financial statements, it is useful to compare the information presented for governmental funds with similar information presented for governmental activities in the government-wide financial statements. By doing so, readers may better understand the long-term impact of the government's near-term financing decisions. Both the governmental fund balance sheet and the governmental fund statement of revenues, expenditures, and changes in fund balances provide a reconciliation to facilitate this comparison between governmental funds and governmental activities.

The District maintains five individual governmental funds. Information is presented separately in the governmental fund balance sheet and in the governmental fund statement of revenues, expenditures, and changes in fund balances for the general fund, capital projects fund, and debt service fund, all of which are considered to be major funds. Data from the other two governmental funds are combined into a single, aggregated presentation. Individual fund data for each of these non-major governmental funds is provided in the form of combining statements elsewhere in this report.

The District adopts an annual appropriated budget for its general fund. A budgetary comparison statement has been provided for the general fund to demonstrate compliance with this budget.

The basic governmental fund statements can be found on pages 19 to 23 of this report.

Fiduciary funds are used to account for resources held for the benefit of parties outside the governmental entity. Fiduciary funds are not reflected in the government-wide financial statement because the District cannot use these funds to finance its operations.

The District uses a fiduciary fund to account for resources held for other groups. Currently the District does not use this fund.

Notes to the Financial Statements

The notes to the financial statements provide additional information that is essential for a full understanding of the data provided in the government-wide and fund financial statements. The notes can be found on pages 24 to 49 of this report.

Other Information

The combining statements referred to earlier in connection with non-major governmental funds are presented immediately following the notes to the financial statements. Combining and individual fund statements and schedules can be found on pages 57 to 65 of this report.

**Piute County School District
Management's Discussion And Analysis
June 30, 2021**

Government-Wide Financial Statements

As noted earlier, net position may serve over time as a useful indicator of a government's financial position. Assets and deferred outflows of resources exceeded liabilities and deferred inflows of resources by \$8,396,879 at June 30, 2021. Below is a summary of the District's assets, liabilities, deferred inflows of resources and net position.

Piute County School District's Net Position

	Governmental Activities		Change 21-20
	2021	2020	
Current and Other Assets	9,144,639	8,571,912	572,727
Capital Assets	7,597,006	7,417,157	179,848
Total Assets	16,741,644	15,989,069	752,575
Deferred Outflows of Resources	419,465	314,065	105,400
Current and Other Liabilities	634,389	658,733	(24,344)
Non-current Liabilities	6,571,361	7,217,531	(646,170)
Total Liabilities	7,205,750	7,876,265	(670,515)
Deferred Inflows of Resources	1,558,480	1,157,615	400,865
Net Position:			
Net Investment in Capital Assets	2,034,503	1,833,821	200,681
Restricted	5,631,295	5,087,911	543,383
Unrestricted	731,082	347,522	383,560
Total Net Position	8,396,879	7,269,254	1,127,625

A portion of the District's positive net position (24%) reflects its investment in capital assets less any related outstanding debt used to acquire those assets. The District uses these capital assets to provide services to students and consequently, these assets are not available for future spending. Although the District's investment in its capital assets is reported net of related debt, it should be noted that the resources needed to repay this debt must be provided from other sources since the capital assets themselves cannot be used to liquidate these liabilities. A portion of the District's positive net position (67%) represent resources that are subject to external restrictions on how they may be used. The remainder of net position may be used to meet the District's ongoing obligations to students, employees, and creditors. However, the unrestricted net asset amount has been earmarked for the following purposes:

- Committed to Undistributed Reserve

**Piute County School District
Management's Discussion And Analysis
June 30, 2021**

As allowed by law, the District has established an undistributed reserve of \$175,000 of general fund budgeted revenues within the general fund which is set aside for contingencies or possible reductions in state funding and not to be used in negotiation or settlement of contract salaries. The maintenance of a sufficient reserve is a key credit consideration in the District's bond rating.

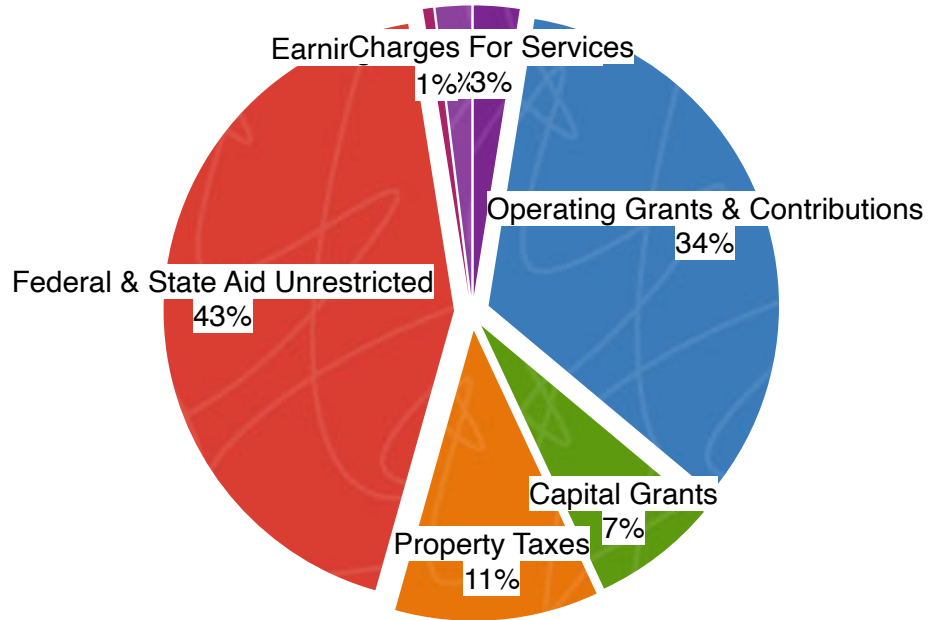
As of June 30, 2021, the District is able to report positive balances in all three categories of net position, both for the District as a whole and for its separate governmental activities.

Piute County School District's Changes In Net Position

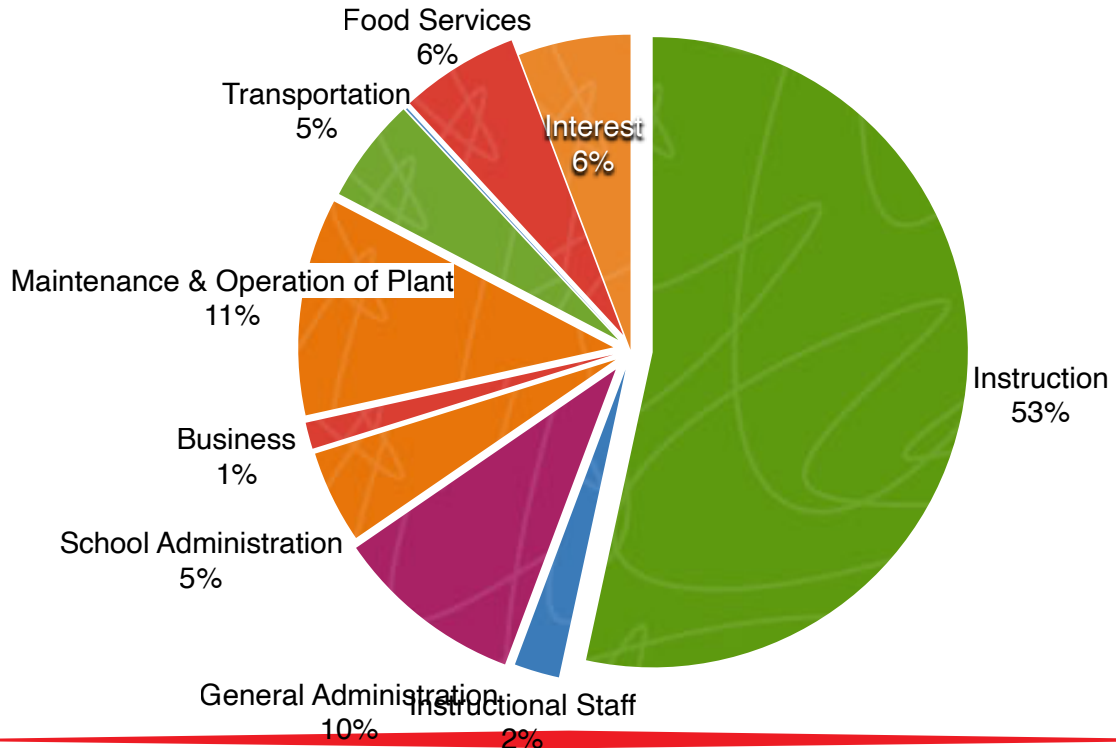
	Governmental Activities		Change 21-20
	2021	2020	
Revenues:			
Program Revenues:			
Charges For Services	181,092	235,454	(54,362)
Operating Grants And Contributions	2,397,870	2,069,878	327,992
Capital Grants And Contributions	497,253	395,951	101,302
General Revenues:			
Property Taxes	808,804	815,022	(6,218)
Federal And State Aid Not Restricted To Specific Purposes	3,080,477	3,051,575	28,903
Earnings On Investments	40,216	94,763	(54,547)
Miscellaneous	140,479	127,285	13,194
Total Revenues	7,146,191	6,789,927	356,264
Expenses:			
Instruction	3,164,585	3,315,430	(150,845)
Support Services:			
Student Support	137,417	119,829	17,588
Instructional Staff	91,932	18,225	73,707
District Administration	575,261	544,743	30,518
School Administration	281,852	266,985	14,867
Business	80,457	95,792	(15,335)
Operation & Maintenance of Plant	659,716	619,555	40,161
Transportation	320,110	268,677	51,433
Other	5,102		
School Lunch Services	360,640	329,838	30,802
Interest on Long Term Liabilities	341,496	341,470	26
Total Expenses	6,018,568	5,920,544	92,922
Changes In Net Position	1,127,623	869,383	258,240
Beginning Net Position	7,269,256	6,399,871	869,385
Ending Net Position	8,396,879	7,269,256	1,127,625

**Piute County School District
Management's Discussion And Analysis
June 30, 2021**

Revenues By Source - Governmental Activities



Expenditures By Function - Governmental Activities



**Piute County School District
Management's Discussion And Analysis
June 30, 2021**

Financial Analysis of the District's Funds

The focus of the District's governmental funds is to provide information on near-term inflows, outflows, and balances of spendable resources. Such information is useful in assessing the District's financing requirements. The unreserved fund balance is divided between designated balances and undesignated balances. The District has designated portions of the unreserved fund balance to earmark resources for certain government-wide liabilities that are not recognized in the governmental funds. Undesignated balances in the general fund are required by state law to be appropriated in the following year's budget. Fund balances of capital projects and other governmental funds are restricted by state law to be spent for the purpose of the fund and are not available for spending at the District's discretion.

The *general fund* is the chief operating fund of the District. At June 30, 2021, unassigned fund balance was \$1,611,286 while the total fund balance was \$2,098,940. The unassigned fund balance decreased by \$39,249 while the total fund balance increased by \$61,631 during the fiscal year. Annual expenditures in the general fund were \$7,830 less than the final budgeted amounts, and resources available for appropriation were \$231,344 more than final budgeted amounts.

The *capital projects fund* has a total fund balance of \$1,250,474, of which \$1,250,474 is restricted for acquisition of capital assets and related expenditures. The fund balance increased by \$252,647 during the fiscal year.

The *debt service fund* has a total fund balance of \$3,485,915, all of which is reserved for the payment of debt service. The fund balance increased by \$218,554 during the fiscal year.

The *food services special revenue fund* has a total fund balance of \$26,278. This balance is within the total allowed by state guidelines and is restricted to food service programs. The fund balance decreased by \$20,721 during the fiscal year.

The *student activity special revenue fund* has a total fund balance of \$135,157. This balance is within the total allowed by state guidelines and is restricted for student activity and other programs at the school level. The fund balance increased during the year by \$20,149.

The *scholarship fund* has a total fund balance of \$105,158. This balance increased during the year by \$12,594.

The *municipal building authority special revenue fund* has an ending fund balance of \$689,824. The fund balance increased during the year by \$60,160.

**Piute County School District
Management's Discussion And Analysis
June 30, 2021**

Capital Assets And Debt Administration

Capital Assets

The capital projects fund is used primarily to account for costs incurred in acquiring, maintaining, and improving sites, constructing and remodeling facilities, and procuring equipment necessary for providing educational programs for all students within the District.

The primary class of capital assets used by the District to provide educational services to the public is school buildings. The District continually evaluates the cost efficiency of its buildings as part of its on-going capital improvements plan.

Capital assets at June 30, 2021 are outlined below:

**Piute County School District's Capital Assets
(Net of Accumulated Depreciation)**

	2021	2020
Land	125,000	125,000
Construction In Progress	-	-
Buildings And Improvements	6,782,345	6,768,604
Furniture And Equipment	689,661	523,553
	<u>7,597,006</u>	<u>7,417,158</u>

Debt Administration

The general obligation bond debt of the District is limited by state law to 4% of the fair market value of the total taxable property in the District. The legal debt limit at June 30, 2021 was approximately \$7,047,514 while the general obligation debt at that date was \$4,435,000 resulting in a legal debt margin of approximately \$2,612,514.

Additional information on the District's long-term debt can be found in Note 7 to the basic financial statements.

Requests For Information

This financial report is designed to provide a general overview of the Piute County School District's finances and to demonstrate the District's accountability for the funds it receives. If you have any questions concerning this report or need additional financial information, please contact the Business Administrator, Piute County School District, County Courthouse, Junction, Utah 84740.

Piute County School District
Statement of Net Position
June 30, 2021

	Governmental Activities
Assets:	
Cash And Investments	4,159,325
Cash And Investments-Restricted	3,774,240
Receivables:	
Property Taxes	846,074
Other Governments	343,351
Other Receivables	17,334
Inventories	4,315
Net Pension Asset	0
Capital Assets:	
Land And Construction In Progress	125,000
Other Capital Assets, Net Of Accumulated Depreciation	7,472,006
Total Assets	16,741,644
Deferred Outflows of Resources:	
Deferred Outflows Related To Pensions	419,465
Liabilities:	
Accounts Payable	333,840
Accrued Interest	61,511
Accrued Salaries	218,426
Unearned Revenue:	
Other Governments	20,612
Non-current Liabilities:	
Due Within One Year	45,833
Due In More Than One Year	6,525,528
Total Liabilities:	7,205,750
Deferred Inflows Or Resources:	
Deferred Inflows Related To Pensions	875,489
Property Taxes Levied For A Future Year	682,991
Total Deferred Inflows Of Resources	1,558,480
Net Position:	
Net Investment In Capital Assets	2,034,503
Restricted For:	
School Lunch	26,278
Student Activity Fund	135,157
Scholarship Fund	105,158
Debt Service	4,114,228
Capital Projects	1,250,474
Unrestricted	731,082
Total Net Position	8,396,879

Piute County School District
Statement of Activities
Year Ended June 30, 2021

Functions	Expenses	Program Revenues			Net (Expense) Revenue And Changes In Net Position
		Charges For Services	Operating Grants And Contributions	Capital Grants And Contributions	Total Governmental Activities
Governmental Activities:					
Instructional Services	3,164,585	172,932	1,727,631	200,000	(1,064,022)
Supporting Services:					
Students	137,417	-	-	-	(137,417)
Instructional Staff	91,932	-	-	-	(91,932)
District Administration	575,261	-	-	-	(575,261)
School Administration	281,852	-	209,347	-	(72,505)
Central	80,457	-	-	-	(80,457)
Operation & Maintenance Of Facilities	659,716	-	-	-	(659,716)
Transportation	320,110	-	201,774	-	(118,336)
Other	5,102	-	-	-	(5,102)
School Lunch Services	360,640	8,160	259,118	-	(93,362)
Interest On Long Term Liabilities	341,496	-	-	297,253	(44,243)
Total School District	6,018,568	181,092	2,397,870	497,253	(2,942,353)

General Revenues:

Property Taxes Levied For:	
General Purposes	607,431
Debt Service	189,450
Capital Outlay	11,923
Federal And State Aid Not Restricted To Specific Purposes	3,080,477
Earnings On Investments	40,216
Miscellaneous	140,479
Total General Revenues	4,069,976
Change In Net Position	1,127,623
Beginning Net Position	7,269,256
Ending Net Position	8,396,879

The notes to the financial statements are an integral part of this statement.

Piute County School District
Balance Sheet
Governmental Funds
Year Ended June 30, 2021

	Major Funds			Other Governmental Funds	Total Governmental Funds
	General	Debt Service	Capital Projects		
Assets:					
Cash & Investments	2,065,942	595,889	1,249,326	248,168	4,159,325
Cash & Investments -Restricted	211,774	2,872,642	-	689,824	3,774,240
Receivables:					
Property Taxes	625,902	205,894	13,262	1,016	846,074
Other Governments	329,241	-	-	14,110	343,351
Other Receivables	17,334	-	-	-	17,334
Inventory	-	-	-	4,315	4,315
Due From Other Funds	-	-	-	-	0
Total Assets	3,250,193	3,674,425	1,262,588	957,433	9,144,639
Liabilities:					
Accounts Payable	333,840	-	-	-	333,840
Accrued Salaries	218,426	-	-	-	218,426
Due To Other Funds	-	-	-	-	-
Unearned Revenue	20,612	-	-	-	20,612
Total Liabilities	572,878	0	0	0	572,878
Deferred Inflows of Resources					
Delinquent Property Taxes	66,468	28,510	2,046	-	97,024
Property Taxes Levied For A Future Year	511,907	160,000	10,068	1,016	682,991
Total Deferred Inflows	578,375	188,510	12,114	1,016	780,015
Fund Balances:					
Non Spendable: Inventories	-	-	-	4,315	4,315
Restricted For:					
Capital Outlay	-	-	1,250,474	-	1,250,474
Food Services	-	-	-	21,963	21,963
Debt Service	-	3,485,915	-	689,824	4,175,739
Other	-	-	-	105,158	105,158
Committed To:					
Economic Stabilization	175,000	-	-	-	175,000
Schools	-	-	-	135,157	135,157
Assigned To Program Balances	312,654	-	-	-	312,654
Unassigned:					
General Fund	1,611,286	-	-	-	1,611,286
Total Fund Balances	2,098,940	3,485,915	1,250,474	956,417	7,791,746
Total Liabilities And Fund Balances	3,250,193	3,674,425	1,262,588	957,433	9,144,639

The notes to the financial statements are an integral part of this statement.

Piute County School District
Reconciliation of the Balance Sheet of Governmental Funds To The Statement Of Net Position
June 30, 2021

Total Fund Balances For Governmental Funds 7,791,746

Total net assets reported for governmental activities in the statement of net assets is different because:

Capital assets used in governmental funds are not financial resources and therefore are not reported in the funds. Those assets consist of:

	Land	125,000	
	Construction In Progress	-	
Buildings & Improvements, Net of \$3,586,695	Accumulated Depreciation	6,782,345	
Furniture & Equipment, Net of \$1,464,633	Accumulated Depreciation	689,661	7,597,006

Some of the District's property taxes will be collected after year-end, but are not available soon enough to pay for the current period's expenditures, and therefore are reported as deferred revenue in the funds. 97,024

Interest on long-term debt is not accrued in governmental funds, but rather is recognized as an expenditure when due. Accrued interest for general obligation bonds and lease revenue bonds is \$61,511 and accrued interest for obligations under capital leases is \$0. (61,511)

Long-term liabilities that pertain to governmental funds, including bonds payable, are not due and payable in the current period and therefore are not reported as fund liabilities. All liabilities - both current and long-term - are reported in the statement of net assets. Balances at year-end are:

Bonds Payable	(5,500,000)	
Notes Payable	(62,503)	
Net Pension Liability	(773,867)	
Deferred Inflows Of Resources Pension Related	(875,489)	
Deferred Outflows Of Revenues Pension Related	419,465	
Accrued Vacation And Sick Leave	(81,642)	
Post Employments Benefits	(153,349)	(7,027,385)

Total Net Position Of Governmental Activities **8,396,879**

The notes to the financial statements are an integral part of this statement.

Piute County School District
Statement of Revenues, Expenditures, and Changes in Fund Balances
Governmental Funds
Year Ended June 30, 2021

	Major Funds			Other Governmental Funds	Total Governmental Funds
	General	Debt Service	Capital Projects		
Revenues:					
Property Taxes	610,819	219,351	14,513	640	845,323
Earnings On Investments	10,176	14,000	-	16,040	40,216
School Lunch Sales	-	-	-	8,160	8,160
Other Local Sources	147,079	-	0	166,332	313,411
State Aid	4,730,124	-	200,000	46,614	4,976,738
Federal Aid	432,454	238,943	56,651	270,814	998,862
Total Revenues	5,930,652	472,294	271,164	508,600	7,182,710
Expenditures:					
Instructional Services	3,315,168	-	-	146,302	3,461,470
Supporting Services:					
Student Services	137,417	-	-	-	137,417
Instructional Staff	95,087	-	-	-	95,087
District Administration	570,175	-	-	-	570,175
School Administration	275,592	-	-	-	275,592
Central	85,891	-	-	-	85,891
Operation And Maintenance Of Facilities	630,630	-	-	-	630,630
Transportation	275,872	-	-	-	275,872
Other	4,462	-	-	640	5,102
School Lunch Services	-	-	-	362,999	362,999
Capital Outlay	-	-	314,881	-	314,881
Debt Service:					
Principal Retirement	-	-	21,083	-	21,083
Interest & Fiscal Charges	3,727	253,740	-	84,029	341,496
Total Expenditures	5,394,021	253,740	335,964	593,970	6,577,695
Excess (Deficiency) Of Revenues Over (Under) Expenditures	536,631	218,554	(64,800)	(85,371)	605,014
Other Financing Sources:					
Transfers	(475,000)	-	317,447	157,553	-
Execution of a Capital Lease	-	-	-	-	-
Total Other Financing Sources	(475,000)	0	317,447	157,553	-
Net Changes In Fund Balances	61,631	218,554	252,647	72,182	605,014
Beginning Fund Balances	2,037,309	3,267,361	997,827	884,234	7,186,731
Ending Fund Balances	2,098,940	3,485,915	1,250,474	956,417	7,791,746

The notes to the financial statements are an integral part of this statement.

Piute County School District
Reconciliation of the Statement of Revenues, Expenditures, and Changes in Fund Balances of
Government Funds to the Statement of Activities
June 30, 2021

Net change in fund balances-total governmental funds 605,014

Amounts reported for governmental activities in the statement of activities are different because:

Governmental funds report capital outlays as expenditures. However, in the statement of activities, assets with an initial, individual cost of more than \$5,000 for furniture and equipment and \$100,000 for buildings and improvements are capitalized and the cost is allocated over their estimated useful lives and reported as depreciation expense. This is the amount by which depreciation exceeded capital outlays in the current period.

Capital Outlays	467,531	
Depreciation Expense	<u>(287,682)</u>	179,849

Some capital asset additions are financed through capital leases. In governmental funds, a capital lease arrangement is considered a source of financing, but in the statement of net assets, the lease obligation is reported as a liability. Repayment of capital lease principal is an expenditure in the governmental funds, but repayment reduces the lease obligation in the statement of net assets.

Interest Expense - Capital Leases	-	
Principal Payments Of Capital Leases	<u>20,833</u>	20,833

The governmental funds report bond proceeds as financing sources, while repayment of bond principal is reported as an expenditure. In the statement of net assets, however, issuing debt increases long-term liabilities and does not affect the statement of activities and repayment of principal reduces the liability. Also, governmental funds report the effect of premiums when debt is first issued, whereas these amounts are deferred and amortized in the statement of activities. Interest is recognized as an expenditure in the governmental funds when it is due. In the statement of activities, however, interest expense is recognized as it accrues, regardless of when it is due. The net effect of these differences in the treatment of general obligation bonds and related items is as follows:

Property tax revenues received prior to the year for which they are being levied are reported as deferred revenue in the governmental funds. They are, however, recorded as revenues in the statement of activities. Deferred property tax revenues increased this year. -36,519

In the statement of activities, certain operating expenses - compensated absences (vacations), special termination benefits (early retirement) - are measured by the amounts earned during the year. In the governmental funds, however, expenditures for these items are measured by the amount of financial resources used (essentially, the amounts actually paid). During this year, accrued sick leave decreased by \$18,030, post retirement benefits payable decreased by \$61,018, and net pension expense was 315,457. 358,445

Change In Net Position Of Governmental Activities 1,127,623

The notes to the financial statements are an integral part of this statement.

Piute County School District
Statement of Revenues, Expenditures, and Changes in Fund Balances - Budget and Actual
General Fund
Year Ended June 30, 2021

	Budgeted Amounts		Actual Amounts	Variance with Final Budget - Positive (Negative)
	Original	Final		
Revenues:				
Property Taxes	476,890	563,226	610,819	47,593
Earnings On Investments	15,000	11,000	10,176	-824
Other Local Sources	103,700	133,586	147,079	13,493
State Aid	4,721,680	4,584,287	4,730,124	145,837
Federal Aid	239,124	407,209	432,454	25,245
Total Revenues	5,556,394	5,699,308	5,930,652	231,344
Expenditures:				
Instructional Services	3,178,407	3,389,088	3,315,168	73,920
Supporting Services:				
Student Services	123,134	120,583	137,417	(16,834)
Instructional Staff		37,512	95,087	(57,575)
District Administration	572,933	551,877	570,175	(18,298)
School Administration	264,053	272,875	275,592	(2,717)
Central	82,633	84,084	85,891	(1,807)
Operation And Maintenance Of Facilities	583,446	655,847	630,630	25,217
Transportation	286,788	289,985	279,599	10,386
Other			4,462	(4,462)
Total Expenditures	5,091,394	5,401,851	5,394,021	12,292
Excess (Deficiency) Of Revenues Over (Under) Expenditures	465,000	297,457	536,631	239,174
Other Financing Sources:				
Capital Lease Proceeds	-	-	-	-
Transfer In	-	-	-	-
Transfer Out	(140,000)	(595,000)	(475,000)	120,000
Total Other Financing Sources	(140,000)	(595,000)	(475,000)	120,000
Net Changes In Fund Balances	325,000	(297,543)	61,631	359,174
Beginning Fund Balances	2,037,309	2,037,309	2,037,309	-
Ending Fund Balances	2,362,309	1,739,766	2,098,940	359,174

The notes to the financial statements are an integral part of this statement.

**Piute County School District
Notes To Financial Statements
June 30, 2021**

1. SUMMARY OF SIGNIFICANT ACCOUNTING POLICIES

The financial statements of the Piute County School District have been prepared in conformity with accounting principles generally accepted in the United States of America (GAAP) as applied to local government units. The Governmental Accounting Standards Board (GASB) is the accepted standard-setting body for establishing governmental accounting and financial reporting principles. The more significant accounting policies of the District are described below.

- **Reporting Entity** - The Board of Education, comprised of five elected individuals, is the primary governing authority for the District. The Board establishes District policies, approves budgets, appoints a Superintendent with responsibilities for administering all educational activities of the District, and appoints a Business Administrator with responsibilities for fiscal matters. The Board is authorized to issue bonds, incur short term debt, levy property taxes, and is not dependent on any other unit of local government. As required by GAAP, these basic financial statements present the activities of the District. The District is not a component unit of any other primary government.

Government-wide and fund financial statements – *The government-wide financial statements* (i.e., the statement of net position and the statement of changes in net position) display information about the primary government (the District). These statements include the financial activities of the overall government, except for fiduciary activities. Eliminations have been made to minimize the double counting of internal activities. Governmental activities generally are financed through taxes, intergovernmental revenues, and other non-exchange transactions.

The statement of activities presents a comparison between direct expenses and program revenues for each function of the District's governmental activities. Direct expenses are those that are specifically associated with a function and, therefore, are clearly identifiable to a particular function. Depreciation expense for capital assets that can specifically be identified with a function are included in its direct expenses. Depreciation expense for "shared" capital assets (for example, a school building is used primarily for instructional, school administration, operation and maintenance of facilities, and school lunch services) are ratably included in the direct expenses of the appropriate functions. Indirect expense allocations that have been made in the funds have been reversed for the statement of activities. Interest on general long-term liabilities is considered an indirect expense and is reported in the statement of activities as a separate line.

Program revenues include 1) fees and charges paid by students and other recipients of goods or services, offered by a given function, and 2) grants and contributions that are restricted to meeting the operational or capital requirements of a particular function. Revenues that are not classified as program revenues, including property taxes, are presented as general revenues.

The notes to the financial statements are an integral part of this statement.

**Piute County School District
Notes To Financial Statements
June 30, 2021**

1. SUMMARY (Continued)

The fund financial statements provide information about the District's funds, including its fiduciary funds. Separate statements for each fund category (governmental, and fiduciary) are presented. The emphasis of fund financial statements is on major governmental funds, each displayed in a separate column. All remaining governmental funds are aggregated and reported as non-major funds.

The District reports the following major governmental funds:

- The *general fund* is the District's primary operating fund. It accounts for all financial resources of the District, except those required to be accounted for in another fund.
- The *capital projects fund* accounts for resources accumulated and payments made for the acquisition and improvement of sites, construction and remodel of facilities, and procurement of equipment necessary for providing educational programs for all students within the District.
- The *debt service fund* accounts for resources (primarily taxes) accumulated and payments made for retirement of general obligation debt and for payment of associated interest and fees on that debt.

The District reports the following non-major special revenue funds that receive revenues which are restricted to expenditures for specified purposes:

- The *school food services fund* accounts for preparation and service of school lunches and breakfasts.
- The *student activity fund* accounts for fees and revenues associated with student activities at the school level.
- The *scholarship fund* accounts for a perpetual scholarship fund.
- The *municipal building authority fund* is a blended component unit and is used to account for lease payments and debt payments on the lease revenue bonds.
- The *tax increment fund* is a new fund required by the Utah state auditor.

**Piute County School District
Notes To Financial Statements
June 30, 2021**

1. SUMMARY (Continued)

Measurement focus, basis of accounting, and financial statement presentation –

The *government-wide and fiduciary fund financial statements* are reported using the economic resources measurement focus and the accrual basis of accounting. Revenues are recorded when earned and expenses are recorded when a liability is incurred, regardless of when the related cash flows take place. Non-exchange transactions, in which the District receives value without directly giving equal value in exchange, include property taxes, grants, and donations. On an accrual basis, revenue from property taxes is recognized in the fiscal year for which taxes are levied. Revenue from grants and donations is recognized in the fiscal year in which all eligibility requirements have been satisfied.

Governmental fund financial statements are reported using the current financial resources measurement focus and the modified accrual basis of accounting. Under this method, revenues are recognized when measurable and available. The District considers all revenues reported in the governmental funds to be available if the revenues are collected within sixty days after year-end. Property taxes and interest are considered to be susceptible to accrual. All other revenue items are considered to be measurable and available only when the District receives cash. Expenditures generally are recorded when the related fund liability is incurred, except for principal and interest on general long-term debt, claims and judgments, early retirement and post-employment healthcare benefits, and compensated absences, which are recognized as expenditures to the extent they have matured. General capital asset acquisitions are reported as expenditures in governmental funds. Proceeds of general long-term debt and acquisitions under capital leases are reported as other financing sources.

Under the terms of grant agreements, the District funds certain programs by a combination of specific cost-reimbursement grants, categorical block grants, and general revenues. Thus, when program expenses are incurred, there are both restricted and unrestricted net position available to finance the program. It is the District's policy to first apply cost-reimbursement grant resources to such programs, followed by categorical block grants, and then by general revenues.

Budgetary Data – Budgets are presented on the modified accrual basis of accounting for all governmental funds. Budgets are not adopted on a District level for the student activities agency fund. All annual appropriations lapse at fiscal year-end with the exception of those indicated as a fund balance reserve. The following procedures are used in establishing the budgetary data reflected in the financial statements.

- During June of each year, the District superintendent submits to the Board a proposed operating budget for the next fiscal year commencing July 1st. This budget includes proposed expenditures and the means of financing them. Included also is a final budget for the current year ending June 30th.

**Piute County School District
Notes To Financial Statements
June 30, 2021**

1. SUMMARY (Continued)

- Copies of the proposed budget are made available for public inspection and review by the District's patrons.

If the District does not exceed the certified tax rate, a public hearing is held prior to June 30th at which the budget is legally adopted by resolution of the Board after obtaining taxpayer input. If the District exceeds the certified tax rate, the budget is adopted in August when data is available to set the tax rates.

- Once adopted, the budget can be amended by subsequent Board action. The Board, upon recommendation of the superintendent can approve reductions in appropriations, but increases in appropriations by fund require a public hearing prior to amending the budget. In accordance with Utah state law, interim adjustments may be made by administrative transfer of money from one appropriation to another within any given fund.
- Certain interim adjustments in estimated revenue and expenditures during the year ended June 30, 2021, have been included in the final budget approved by the Board, as presented in the financial statements. Budgets were amended at year end.
- Expenditures may not legally exceed budgeted appropriations at the fund level.

Encumbrance accounting is employed in the governmental funds and the internal service fund. Encumbrances (e.g., purchase orders and contracts) outstanding at year end are reported as reservations of fund balances and do not constitute expenditures or liabilities because the commitments will be re-appropriated and honored during the subsequent year.

Negative variances in total revenues and the positive variances in total expenditures are largely a result of federal and state program revenues and related expenditures that do not have a direct impact on the undesignated fund balance. Budgets generally assume the expenditure of all available resources. Therefore, when the budget is prepared, it is assumed these funds will not have a carryover of revenue to a subsequent year.

Program revenue received but not spent is restricted and deferred to the subsequent fiscal year. As a result, overall fund revenue variances will be negative, and overall fund expenditure variances will be positive.

Deposits and Investments – The cash balances of substantially all funds are pooled and invested by the District for the purpose of increasing earnings through investment activities and providing efficient management of temporary investments. The pool's investments are reported at fair value at year-end. Changes in the fair value of investments are recorded as investment earnings. Earnings on pooled funds are apportioned and paid or credited to the funds based on the average balance of each participating fund.

**Piute County School District
Notes To Financial Statements
June 30, 2021**

1. SUMMARY (Continued)

Cash and Cash Equivalents – The District considers cash and cash equivalents in proprietary funds to be cash on hand, demand deposits, and short-term investments with original maturities of three months or less from the date of acquisition, including investments in the Public Treasurers' Investment Fund (PTIF).

Inter-fund Receivables and Payables – Activity between funds that are representative of lending/borrowing arrangements outstanding at year-end are referred to as either "due to/from other funds" (i.e., current portion of inter-fund loans) or "advances from/to other funds" (i.e., the non-current portion of inter-fund loans).

Advances between funds, as reported in the fund financial statements, are offset by a fund balance reserve account in applicable governmental funds to indicate that they are not available for appropriation and are not expendable available resource.

Inventories – Inventories are valued at cost or, if donated, at fair value when received, using the moving average method. The consumption method of accounting is applied to the inventories of all funds.

Inventories of donated United States Department of Agriculture (USDA) commodities on hand at year-end are reported on the balance sheet at fair market value on the date received as inventory. Commodities used during the year are reported as revenues and expenditures on the operating statement.

Capital Assets – Capital assets, which include land, water stock, buildings and improvements, and furniture and equipment, are reported in the government-wide financial statements. The District defines capital assets as assets with an initial, individual cost of more than \$5,000 for land, furniture and equipment and \$100,000 for buildings and improvements and an estimated useful life in excess of two years. Purchased or constructed capital assets are reported at cost or estimated historical cost. Donated capital assets are recorded at estimated fair value at the date of donation. The cost of normal maintenance and repairs that do not add to the value of the asset or materially extend asset lives are not capitalized.

Major outlays for capital assets and improvements are capitalized as projects are constructed. Interest incurred during construction is not capitalized.

**Piute County School District
Notes To Financial Statements
June 30, 2021**

1. SUMMARY (Continued)

Buildings and improvements and furniture and equipment of the District are depreciated using the straight-line method over the following estimated useful lives:

Assets	Years
Buildings	50
Building Improvements	20
Furniture	15
Portable Classrooms	15
Machinery and Tools	15
Buses	15
Laboratory Equipment	10
Musical Instruments	10
Licensed Vehicles	10
Computers	5

Compensated Absences – Under terms of association agreements, twelve-month or full-year employees earn vacation and sick leave in amounts varying with tenure and classification. In the event of termination or death, an employee is reimbursed for accumulated sick days at \$80 per day. No reimbursement or accrual is made for unused vacation leave.

All sick pay plus related payroll taxes are accrued when incurred in the government-wide financial statements. A liability for these amounts is reported in the governmental funds if they have matured, for example, as a result of employee resignations and retirements.

Long-term Obligations – In the government-wide financial statements, long-term debt and other long-term obligations are reported as liabilities in the applicable statement of net position. Bond premiums and discounts, as well as issuance costs, are deferred and amortized over the life of the bonds using the straight-line method, which approximates the effective interest method. Bonds payable are reported net of the applicable bond premium or discount. Bond issuance costs are reported as deferred charges and amortized over the term of the related debt.

In the fund financial statements, governmental fund types recognize bond premiums and discounts, as well as bond issuance costs, during the current period. The face amount of debt issued is reported as other financing sources. Premiums received on debt issuances are reported as other financing sources while discounts on debt issuances are reported as other financing uses. Issuance costs, whether or not withheld from the actual debt proceeds received, are reported as debt service expenditures.

**Piute County School District
Notes To Financial Statements
June 30, 2021**

1. SUMMARY (Continued)

Pensions — For purposes of measuring the net pension liability (asset), deferred outflows of resources and deferred inflows of resources related to pensions, and pension expense, information about the fiduciary net position of the Utah State Retirement Systems (URS) and additions to/deductions from URS's fiduciary net position have been determined on the same basis as they are reported by URS. For this purpose, benefit payments (including refund of employee contributions) are recognized when due and payable in accordance with the benefit terms. Investments are at fair value.

Deferred Outflows/Inflows of Resources— In addition to assets, financial statements will sometimes report a separate section for deferred outflows of resources. This separate financial statement element, deferred outflows of resources, represents a consumption of net position that applies to a future period(s) and will not be recognized as an outflow of resources (expense/expenditure) until then. In addition to liabilities, the financial statements will sometimes report a separate section for deferred inflows of resources. This separate financial statement element, deferred inflows of resources, represents an acquisition of net position that applies to a future period(s) and will not be recognized as an inflow of resources (revenue) until that time.

Net Position/Fund Balances—The residual of all other elements presented in a statement of net position is net position on the government-wide and proprietary fund financial statements and the residual of all other elements presented in a balance sheet on the governmental fund financial statements is fund balance.

Net position is divided into three components: net investment in capital assets (capital assets net of related debt less unspent bond proceeds), restricted, and unrestricted. Net position is reported as restricted when constraints are placed upon it by external parties or are imposed by constitutional provisions or enabling legislation.

Piute County School District
Notes To Financial Statements
June 30, 2021

1. SUMMARY (Continued)

The governmental fund financial statements present fund balances based on a hierarchy that shows, from highest to lowest, the level or form of constraints on fund balance resources and the extent to which the District is bound to honor them. The District first determines and reports nonspendable balances, then restricted, then committed, and so forth. Fund balance classifications are summarized as follows:

- **Nonspendable:** This category includes fund balance amounts that cannot be spent because they are either a) not in spendable form or b) legally or contractually required to be maintained intact. Fund balance amounts related to inventories, prepaid expenditures, and endowments are classified as nonspendable.
- **Restricted:** This category includes net fund resources that are subject to external constraints that have been placed on the use of the resources either a) imposed by creditors (such as through a debt covenant), grantors, contributors, or laws or regulations of other governments or b) imposed by law through constitutional provisions or enabling legislation. Restricted fund balance amounts include the following:
 - a) Unspent tax revenues for specific purposes (capital projects, debt service, student transportation, K-3 reading program, and community recreation).
 - b) Remaining fund balances in the School Lunch Fund.
- **Committed:** This category includes amounts that can only be used for specific purposes established by formal action of the District's Board of Education. Fund balance commitments can only be removed or changed by the same type of action (for example, resolution) of the Board of Education. This classification also includes contractual obligations to the extent that existing resources have been specifically committed for use in satisfying those contractual requirements. The Board of Education has approved to commit fund balance amounts for the following purposes:
 - a) As defined in Utah law as an "undistributed reserve," the District maintains for economic stabilization up to five percent of General Fund budgeted expenditures. Potential state budget cuts, disasters, immediate capital needs, and other significant events are circumstances or conditions that signal the need for stabilization. Additionally, the commitment is necessary to maintain liquidity (i.e. reducing any disparity between when financial resources are available to make payments and the maturity of related liabilities). Also defined by state law, the commitment is not to be used "in the negotiation or settlement of contract salaries for school district employees."
 - b) Resources held by schools in the other governmental funds.
 - c) Employee obligations related to the phase out of early retirement stipends.
- **Assigned:** This category includes General Fund balance amounts that the District intends to be used for a specific purpose but are neither restricted nor committed. This intent is expressed by written approval of the District's administration comprised of superintendent, assistant superintendents, and business administrator. This category also includes the remaining positive fund balance for other governmental funds. The District has assigned General Fund resources that are to be used for textbooks, supplies, and other unrestricted school programs.

**Piute County School District
Notes To Financial Statements
June 30, 2021**

1. SUMMARY (Continued)

- Unassigned. Residual balances in the General Fund are classified as unassigned.

When both restricted and unrestricted resources are available for use, it is the District's policy to use committed resources first, followed by assigned resources, then unassigned resources as they are needed.

Comparative Data and Reclassifications – Comparative data for the prior year has been presented in certain sections of the accompanying financial statements in order to provide an understanding of changes in the District's financial position and operations. Also, certain amounts presented in the prior year data have been reclassified in order to be consistent with current year's presentation.

Use of Estimates - Presenting financial statements in conformity with Generally Accepted Accounting Principles requires management to make certain estimates concerning assets, liabilities, revenues and expenses. Actual results may vary from these estimates.

2. DEPOSITS AND INVESTMENTS

A. Deposits

Deposits – Custodial Credit Risk – Custodial credit risk is the risk that in the event of a bank failure, the District's deposits may not be returned to it. The district follows the requirements of the Utah Money Management Act (Section 51, chapter 7 of the Utah Code) in handling its depository and investing transactions. The District considers the actions of the Council to be necessary and sufficient for adequate protection of its uninsured bank deposits. District funds are deposited in qualified depositories as defined by the Act. The District does not have a deposit policy for custodial credit risk. As of June 30, 2021, the District's custodial credit risk for deposits was as follows:

Depository Account	Custodial Credit Risk	Balance June, 30 2021
Regular Checking	FDIC Insured	\$250,000
Regular Checking	Uninsured & Collateralized	\$2,781,972
Regular Savings	FDIC Insured	\$55,222
Total:		\$3,087,194

**Piute County School District
Notes To Financial Statements
June 30, 2021**

2. DEPOSITS AND INVESTMENTS (Continued)

B. Investments

Most of the District's investments are managed through participation in the state Public Treasurer's Investment Fund and through a repurchase agreement arrangement with a local bank. The district also has a Certificate of Deposit account and a Equity Mutual fund for scholarships. As of June 30, 2021, the District had the following investments:

<u>Investment</u>	<u>Maturities</u>	<u>Fair Value</u>
Utah Public Treasurers' Investment Fund	Less than one year	\$4,636,610
Certificate of Deposit	Less than one year	\$100,247
Equity Mutual Funds	Less than one year	\$105,158
		\$4,842,015

Investments – Interest Rate Risk – The District does not have a formal investment policy that limits investment maturities as a means of managing its exposure to fair value losses arising from increasing interest rates. However, interest rate risk is managed by compliance to the Utah Money Management Act which provides guidance for handling depository and investing transactions in order to minimize interest rate risk.

Investments – Credit Risk – The District follows the requirements of the Utah Money Management Act (Section 51, chapter 7 of the Utah Code) in handling its depository and investing transactions. District funds are deposited in qualified depositories as defined by the Act. The Act also authorizes the District to invest in the Utah Public Treasurers' Investment Fund (PTIF), certificates of deposit, U.S. Treasury obligations, U.S. agency issues, high-trade commercial paper, bankers' acceptances, repurchase agreements, corporate bonds, restricted mutual funds, and obligations of governmental entities within the State of Utah. The PTIF is invested in accordance with the Act. The State Money Management Council provides regulatory oversight for the PTIF. The degree of risk of the PTIF depends upon the underlying portfolio. The Act and Council rules govern the financial reporting requirements of qualified depositories in which public funds may be deposited and prescribe the conditions under which the designation of a depository shall remain in effect. If a qualified depository should become ineligible to hold public funds, public treasurers are notified immediately. The District considers the actions of the Council to be necessary and sufficient for adequate protection of its investments. The District has no investment policy that would further limit its investment choices.

Investments – Custodial Credit Risk – For an investment, custodial credit risk is the risk that, in the event of the failure of the counter-party, the District will not be able to recover the value of its investments or collateral securities that are in the possession of an outside party.

**Piute County School District
Notes To Financial Statements
June 30, 2021**

2. DEPOSITS AND INVESTMENTS (Continued)

Fair Value of Investments

The District measures and records its investments using fair value measurement guidelines established by generally accepted accounting principles. These guidelines recognize a three-tiered fair value hierarchy, as follows:

- Level 1: Quoted prices for identical investments in active markets;
- Level 2: Observable inputs other than quoted market prices; and,
- Level 3: Unobservable inputs.

At June 30, 2019, the District had the following recurring fair value measurements:

Investments By Fair Value Level	6/30/21	Fair Value Measurements Using		
		Level 1	Level 2	Level 3
Utah Public Treasurers Investment Fund	4,636,610	-	4,636,610	-
Certificate of Deposit	100,247	100,247	-	-
Equity Securities				
Equity Mutual Funds	105,158	-	105,158	-
Total	4,842,015	100,247	4,741,768	-

Debt and equity securities classified in Level 1 are valued using prices quoted in active markets for those securities. Debt and equity securities classified in Level 2 are valued using the following approaches:

- U.S. Treasuries, U.S. Agencies, and Commercial Paper: quoted prices for identical securities in markets that are not active;
- Corporate and Municipal Bonds: quoted prices for similar securities in active markets;
- Repurchase Agreements, Negotiable Certificates of Deposit, and Collateralized Debt Obligations: matrix pricing based on the securities' relationship to benchmark quoted prices;
- Money Market, Bond, and Equity Mutual Funds: published fair value per share (unit) for each fund;
- Utah Public Treasurers' Investment Fund: application of the June 30, 2021 fair value factor, as calculated by the Utah State Treasurer, to the District's average daily balance in the Fund; and,
- Donated Real Estate: recent appraisals of the real estate's value.

**Piute County School District
Notes To Financial Statements
June 30, 2021**

3. PROPERTY TAXES

The property tax revenue of the District is collected and distributed by the Piute County treasurer as an agent of the District. Utah statutes establish the process by which taxes are levied and collected. The county assessor is required to assess real property as of January 1 and complete the tax rolls by May 15. By July 21, the county auditor is to mail assessed value and tax notices to property owners. A taxpayer may then petition the County Board of Equalization between August 1 and August 15 for a revision of the assessed value. The county auditor makes approved changes in assessed value by November 1 and on this same date the county auditor is to deliver the completed assessment rolls to the county treasurer. Tax notices are mailed with a due date of November 30. Delinquent taxes are subject to a 2% penalty, with a \$10 minimum penalty. If delinquent taxes and penalties are not paid by January 15 of the following year, these delinquent taxes, including penalties, are subject to an interest charge at an annual rate equal to the federal discount rate plus 6%. The interest rate period is from January 1 until the date paid.

Beginning January 1, 1992, an annual uniform fee based on the value of motor vehicles was levied in lieu of an ad valorem tax on motor vehicles. This uniform fee was 1.5% of the fair market value statewide value of the property, as established by the State Tax Commission. Effective January 1, 1999, legislation required motor vehicles be subject to an "age-based" fee that is due each time a vehicle is registered. The age-based fee is for passenger type vehicles and ranges from \$10 to \$150 based on the age of the vehicle. The revenues collected in each county from motor vehicle fees is distributed by the county to each taxing entity in which the property is located in the same proportion in which revenue collected from ad valorem real property tax is distributed. The District recognizes motor vehicle fees as property tax revenue when the County collects it.

As of June 30, 2021, property taxes receivable by the District includes uncollected taxes assessed as of January 1, 2021 or earlier. It is expected that all assessed taxes (including delinquencies plus accrued interest and penalties) will be collected within a five-year period, after which time the county treasurer may force sale of property to collect the delinquent portion.

**Piute County School District
Notes To Financial Statements
June 30, 2021**

4. CAPITAL ASSETS

Capital asset activity for the year ended June 30, 2021 was as follows:

	<u>Beginning Balance</u>	<u>Increases</u>	<u>Decreases</u>	<u>Ending Balance</u>
Governmental Activities:				
Capital Assets Not Being Depreciated				
Land	125,000	-	-	125,000
Construction In progress	-	-	-	-
Total Capital Assets, Not Being Depreciated	<u>125,000</u>	<u>0</u>	<u>0</u>	<u>125,000</u>
Capital Assets, Being Depreciated:				
Buildings & Improvements	10,153,300	215,740	0	10,369,040
Furniture & Equipment	<u>2,079,906</u>	<u>251,791</u>	<u>(71,948)</u>	<u>2,259,749</u>
Total Capital Assets, Being Depreciated	<u>12,233,206</u>	<u>467,531</u>	<u>(71,948)</u>	<u>12,628,789</u>
Accumulated Depreciation For:				
Buildings & Improvements	(3,384,696)	(201,999)	0	(3,586,695)
Furniture & Equipment	<u>(1,556,353)</u>	<u>(85,683)</u>	<u>71,948</u>	<u>(1,570,088)</u>
Total Accumulated Depreciation	<u>(4,941,049)</u>	<u>(287,682)</u>	<u>71,948</u>	<u>(5,156,783)</u>
Net Total Capital Assets Being Depreciated	<u>7,292,157</u>	<u>179,849</u>	<u>0</u>	<u>7,472,006</u>
Net Governmental Activities Capital Assets	<u>7,417,157</u>	<u>179,849</u>	<u>0</u>	<u>7,597,006</u>

Depreciation expense was charged to functions of the District as follows:

Governmental Activities:	
Instructional Services	\$ 169,105
Supporting Services:	
District Administration	14,550
School Administration	6,950
Central	875
Operation & Maintenance of Facilities	38,550
Transportation	53,702
School Lunch Services	<u>3,950</u>
Total Depreciation Expense Governmental Activities	<u>287,682</u>

**Piute County School District
Notes To Financial Statements
June 30, 2021**

5. STATE RETIREMENT PLANS AND OPEB

Description of plans – Eligible employees of the District are provided with the following plans through the Utah Retirement Systems (the URS) administered by the URS:

Defined Benefit Plans

- Public Employees Noncontributory Retirement System (Noncontributory System); is a multiple employer, cost sharing, public employee retirement system.
- Tier 2 Public Employees Contributory Retirement System (Tier 2 Public Employees System) is a multiple employer cost sharing public employee retirement system;

The Tier 2 Public Employees System became effective July 1, 2011. All eligible employees beginning on or after July 1, 2011, who have no previous service credit with any of the Utah Retirement Systems, are members of the Tier 2 Retirement System.

The Utah Retirement Systems (Systems) are established and governed by the respective sections of Title 49 of the Utah Code Annotated 1953, as amended. The Systems' defined benefit plans are amended statutorily by the State Legislature. The Utah State Retirement Office Act in Title 49 provides for the administration of the Systems under the direction of the Utah State Retirement Board, whose members are appointed by the Governor. The Systems are fiduciary funds defined as pension (and other employee benefit) trust funds. URS is a component unit of the State of Utah. Title 49 of the Utah Code grants the authority to establish and amend the benefit terms.

URS issues a publicly available financial report that can be obtained by writing Utah Retirement Systems, 560 E. 200 S, Salt Lake City, Utah 84102 or visiting the website: www.urs.org.

Summary of Benefits by System

Benefits provided: URS provides retirement, disability, and death benefits.

Retirement benefits are as follows:

System	Final Average Salary	Years of Service Required and/or Age Eligible for Benefit	Benefit Percentage per Year of Service	COLA **
Noncontributory System	Highest 3 Years	30 years any age 25 years any age* 20 years age 60* 10 years age 62* 4 years age 65	2.0% per year all years	Up to 4%
Tier 2 Public Employees System	Highest 5 Years	35 years any age 20 years age 60* 10 years age 62* 4 years age 65	1.50% per year all years	Up to 2.5%

* with actuarial reductions

** All post-retirement cost-of-living adjustments are non-compounding and are based on the original benefit except for Judges, which is a compounding benefit. The cost-of-living adjustments are also limited to the actual Consumer Price Index (CPI) increase for the year, although unused CPI increases not met may be carried forward to subsequent years.

**Piute County School District
Notes To Financial Statements
June 30, 2021**

5. STATE RETIREMENT PLANS AND OPEB (Continued)

Contributions – As a condition of participation in the plans, employers and/or employees are required to contribute certain percentages of salary and wages as authorized by statute and specified by the Utah State Retirement Board. Contributions are actuarially determined as an amount that, when combined with employee contributions (where applicable), is expected to finance the costs of benefits earned by employees during the year, with an additional amount to finance any unfunded actuarial accrued liability.

For the year ended June 30, 2020, District required contribution rates for the plans were as follows:

	<u>Employee Paid</u>	<u>Employer</u>	<u>Employer 401(k)</u>	<u>Totals</u>
Contributory System				
State School Div - Tier 1	6.00%	17.70%	N/A	23.70%
State School Div - Tier 2	N/A	19.13%	0.89%	20.02%
Noncontributory System				
State School Div - Tier 1	N/A	22.19%	1.50%	23.69%
Tier 2 DC Only				
State and School	N/A	10.02%	10.00%	20.02%

* The district is required to contribute additional amounts based on covered-employee payroll to finance the unfunded actuarial accrued liability (UAAL) of the Tier 1 plans.

** District contribution includes 0.08% of covered-employee payroll of the Tier 2 plans for death benefits.

***Tier 2 rates include a statutory required contribution to finance the unfunded actuarial accrued liability of the Tier 1 plans.

For the year ended June 30, 2021, District and employee contributions to the plans were as follows:

<u>System</u>	<u>District Contributions</u>	<u>Employee Contributions</u>
Noncontributory System	\$336,508	N/A
Tier 2 Public Employees System	\$133,767	-
Tier 2 DC Only System	\$6,184	N/A
Total Contributions	\$476,459	-

Contributions reported are the URS Board approved required contributions by System. Contributions in the Tier 2 Systems are used to finance the unfunded liabilities in the Tier 1 Systems.

**Piute County School District
Notes To Financial Statements
June 30, 2021**

5. STATE RETIREMENT PLANS AND OPEB (Continued)

Combined Pension Assets, Liabilities, Expense, and Deferred Outflows and Inflows of Resources Relating to Pensions

At June 30, 2021, the district reported a net pension asset of \$ 0 and a net pension liability of \$773,867.

	(Measurement Date): December 31, 2020				
	Net Pension Asset	Net Pension Liability	Proportionate Share	Proportionate Share December 31, 2019	Change (Decrease)
Noncontributory System	-	\$ 768,958	0.0576810%	0.0607372%	0.0030562%
Their 2 Public Employees System	-	\$ 4,909	0.0341343%	0.0303096%	0.0038247%
	-	\$ 773,867			

The net pension asset and liability was measured as of December 31, 2020, and the total pension liability used to calculate the net pension asset and liability was determined by an actuarial valuation as of January 1, 2020 and rolled-forward using generally accepted actuarial procedures. The proportion of the net pension asset and liability is equal to the ratio of the employer's actual contributions to the Systems during the plan year over the total of all employer contributions to the System during the plan year.

For the year ended June 30, 2021, we recognized pension expense of \$161,582. At June 30, 2021, we reported deferred outflows of resources and deferred inflows of resources relating to pensions from the following sources:

	Deferred Outflows of Resources	Deferred Inflows of Resources
Differences between expected and actual experience	\$ 88,852	\$ 2,248
Change assumptions	\$ 78,743	\$ 179
Net difference between projected and actual earnings on pension plan investments	\$ 0	\$ 788,361
Changes in proportion and differences between contributions and proportionate share of contributions	\$ 7,040	\$ 84,701
District contributions subsequent to the measurement date	\$ 244,830	-
Total	\$ 419,465	\$ 875,489

\$244,830 reported as deferred outflows of resources related to pensions results from contributions made by us prior to our fiscal year end, but subsequent to the measurement date of December 31, 2020.

**Piute County School District
Notes To Financial Statements
June 30, 2021**

5. STATE RETIREMENT PLANS AND OPEB (Continued)

These contributions will be recognized as a reduction of the net pension liability in the upcoming fiscal year. Other amounts reported as deferred outflows of resources and deferred inflows of resources related to pensions will be recognized in pension expense as follows:

Year Ending December 31,	Deferred Outflows (Inflows) of Resources
2021	\$ (220,061)
2022	\$ (88,658)
2023	\$ (272,071)
2024	\$ (129,404)
2025	\$ 1,634
Thereafter	\$ 7,706

Actuarial assumptions – The total pension liability in the December 31, 2020, actuarial valuation was determined using the following actuarial assumptions, applied to all periods included in the measurement:

Inflation	2.50 percent
Salary Increases	3.25 - 9.75 percent, average, including inflation
Investment Rate of Return	6.95 percent, net of pension plan investment expense, including inflation

Mortality rates were adopted from an actuarial experience study dated January 1, 2020. The retired mortality tables are developed using URS retiree experience and are based upon gender, occupation, and age as appropriate with projected improvement using 80% of the ultimate rates from the MP-2019 improvement assumption using a base year of 2020. The mortality assumption for active members is the PUB-2010 Employees Mortality Table for public employees, teachers, and public safety members, respectively.

The actuarial assumptions used in the January 1, 2020, valuation were based on the results of an actuarial experience study for the five year period ending December 31, 2019.

The long-term expected rate of return on pension plan investments was determined using a building-block method in which best-estimate ranges of expected future real rates of return (expected returns, net of pension plan investment expense and inflation) are developed for each major asset class and is applied consistently to each defined benefit pension plan. These ranges are combined to produce the long-term expected rate of return by weighting the expected future real rates of return by the target asset allocation percentage and by adding expected inflation. The target allocation and best estimates of arithmetic real rates of return for each major asset class are summarized in the following table:

**Piute County School District
Notes To Financial Statements
June 30, 2021**

5. STATE RETIREMENT PLANS AND OPEB (Continued)

<u>Asset Class</u>	<u>Expected Return Arithmetic Basis</u>		
	<u>Target Allocation</u>	<u>Real Return Arithmetic Basis</u>	<u>Long-Term Expected Portfolio Real Rate of Return</u>
Equity Securities	37%	6.30%	2.33%
Debt Securities	20%	0.00%	0.00%
Real Assets	15%	6.19%	0.93%
Private Equity	12%	9.50%	1.14%
Absolute Return	16%	2.75%	0.44%
Cash and Cash Equivalents	0%	0.00%	0.00%
Total	<u>100.00%</u>		<u>4.84%</u>
Inflation			<u>2.50%</u>
Expected Arithmetic Nominal Return			<u>7.34%</u>

The 6.95% assumed investment rate of return is comprised of an inflation rate of 2.50%, a real return of 4.45% that is net of investment expense.

Discount rate: The discount rate used to measure the total pension liability was 6.95 percent. The projection of cash flows used to determine the discount rate assumed that employee contributions will be made at the current contribution rate, and that contributions from all participating employers will be made at contractually required rates that are actuarially determined and certified by the URS Board. Based on those assumptions, the pension plan's fiduciary net position was projected to be available to make all projected future benefit payments of current, active, and inactive employees. Therefore, the long-term expected rate of return on pension plan investments was applied to all periods of projected benefit payments, to determine the total pension liability. The discount rate does not use the Municipal Bond Index Rate. The discount rate remained unchanged at 6.95 percent.

Sensitivity of the proportionate share of the net pension asset and liability to changes in the discount rate: The following presents the proportionate share of the net pension liability calculated using the discount rate of 6.95 percent, as well as what the proportionate share of the net pension liability would be if it were calculated using a discount rate that is 1-percentage-point lower (5.95 percent) or 1-percentage-point higher (7.95 percent) than the current rate:

**Piute County School District
Notes To Financial Statements
June 30, 2021**

5. STATE RETIREMENT PLANS AND OPEB (Continued)

	1% Decrease (5.95%)	Discount Rate (6.95%)	1% Increase (7.95%)
Noncontributory System	\$ 2,465,105	\$ 768,958	\$ (649,253)
Tier 2 Public Employees System	\$ 82,612	\$ 4,909	\$ (54,531)
	<u>\$ 2,547,717</u>	<u>\$ 773,867</u>	<u>\$ (703,784)</u>

***Pension plan fiduciary net position: Detailed information about the pension plans fiduciary net position is available in the separately issued URS financial report.

Defined Contributions Savings Plans - The Defined Contribution Savings Plans are administered by the Utah Retirement Systems Board and are generally supplemental plans to the basic retirement benefits of the Retirement Systems, but may also be used as a primary retirement plan. These plans are voluntary tax-advantaged retirement savings programs authorized under sections 401(k), 457(b) and 408 of the Internal Revenue code. Detailed information regarding plan provisions is available in the separately issued URS financial report.

Piute County School District participates in the following Defined Contribution Savings Plans with Utah Retirement Systems:

- 401(k) Plan
- Roth IRA Plan

Employee and employer contributions to the Utah Retirement Defined Contribution Savings Plans for fiscal year ended June 30, were as follows:

	2021	2020	2019
401(k) Employer Contributions	\$ 49,273	\$ 45,590	\$ 41,859
401(k) Employee Contributions	\$ 50,813	\$ 49,306	\$ 41,224
Roth IRA Employer Contributions	N/A	N/A	N/A
Roth IRA Employee Contributions	\$ 6,805	\$ 3,925	\$ 1,980

Separation Payments Plan OPEB – The District has a separation payments plan for all eligible employees who retire after meeting certain criteria. To be eligible for the plan employees must meet certain requirements as set forth in the plan as amended by District policy #2053 “Retirement Incentive Policy”. The liability under this plan at June 30, 2021 was \$151,099.

**Piute County School District
Notes To Financial Statements
June 30, 2021**

6. RISK MANAGEMENT

The District is exposed to various risks of loss related to torts; theft of, damage to, and destruction of assets; errors and omissions; injuries to employees; and natural disasters. The District has joined with other public entities in a common risk management and insurance program operated by the State of Utah Division of Risk Management. The District pays premiums to this risk pool, the Utah State Risk Management Fund, for its general insurance coverage. The pool is self-sustaining through member premiums and reinsures through commercial companies for claims in excess of specified amounts for certain types of risks. The District is subject to a minimal deductible for claims of the risk pool. The District has purchased commercial insurance for other risks of loss including employee health and accident insurance. Settled claims resulting from these risks have not exceeded commercial insurance coverage in any of the past three fiscal years.

**Piute County School District
Notes To Financial Statements
June 30, 2021**

7. LONG-TERM DEBT

Long-term liability activity for the year ended June 30, 2021 was as follows:

	<u>Beginning Balance</u>	<u>Additions</u>	<u>Reductions</u>	<u>Ending Balance</u>	<u>Due Within One Year</u>
Governmental Activities:					
Bonds Payable:					
General Obligation	\$4,435,000	-	-	\$4,435,000	-
Lease Revenue Bonds	<u>\$1,065,000</u>	-	-	<u>\$1,065,000</u>	-
Net Total Bonds Payable	\$5,500,000	-	-	\$5,500,000	-
Obligations Under Capital Leases	-	-	-	-	-
Notes Payable	\$ 83,336	-	\$ (20,833)	\$ 62,503	\$ 20,833
Net Pension Liability	\$1,356,216	\$ (105,310)	\$ (477,039)	\$ 773,867	-
Accrued Leave Pay	\$ 63,612	\$ 18,030	\$ 0	\$ 81,642	-
Post Employment Benefits	<u>\$ 214,367</u>	-	<u>\$ (61,018)</u>	<u>\$ 153,349</u>	<u>\$ 25,000</u>
Total Governmental Activity Long-Term Liabilities	<u>\$7,217,531</u>	<u>\$ (87,280)</u>	<u>\$ (558,890)</u>	<u>\$6,571,361</u>	<u>\$ 45,833</u>

Payments on the general obligation bonds are made by the debt service fund from property taxes and earnings on investments. Lease revenue bonds are paid from a tax levy in the capital projects fund. The obligations under capital leases are paid by the capital projects fund or general fund depending on the lease type. Vacation, sick leave, and early retirement benefits will be paid by the fund in which the employee worked.

**Piute County School District
Notes To Financial Statements
June 30, 2021**

7. LONG-TERM DEBT (Continued)

General Obligation Bonds – During 2010 the District issued General Obligation QSCB School Building bonds in the amount of \$4,435,000. The proceeds are to be used for the remodel and construction of Piute High School located in Junction, Utah. The bonds will mature on April 15, 2027. However, the District is required to make annual deposits to a sinking fund account to be held by the paying agent. These bonds carry an annual interest rate of 5.71%. The District is required to make annual interest payments on the outstanding bonds; however, it is anticipated that annually the District will receive a subsidy from the Federal government to cover the interest payment. The required debts service schedule is as follows:

Fiscal Year Ending June 30,	\$4,435,000 Series 2010		Federal Interest Subsidy (1)	Estimated Annual Contributions to Sinking Fund (2)	Total Payment Required for Debt Service (2)
	Principal	Interest			
2022	-	\$ 253,239	\$ (253,239)	\$ 260,882	\$ 260,882
2023	-	\$ 253,239	\$ (253,239)	\$ 260,882	\$ 260,882
2024	-	\$ 253,239	\$ (253,239)	\$ 260,882	\$ 260,882
2025	-	\$ 253,239	\$ (253,239)	\$ 260,882	\$ 260,882
2026	-	\$ 253,239	\$ (253,239)	\$ 260,882	\$ 260,882
2027	\$ 4,435,000	\$ 253,239	\$ (253,239)	\$ 260,882	\$ 260,882
Totals	\$ 4,435,000	\$ 1,519,434	\$ (1,519,434)	\$ 1,565,292	\$ 1,565,292

(1) Assumes all interest due will be paid from the federal interest rate subsidy.

(2) The District will contribute \$260,882 annually to a sinking fund account.

The balance in the sinking fund account at June 30, 2021 is \$2,872,611.

**Piute County School District
Notes To Financial Statements
June 30, 2021**

7. LONG-TERM DEBT (Continued)

MBA Lease Revenue Bonds – During 2010 the Municipal Building Authority of the District issued \$1,065,000 QSCB School Building Lease Revenue Bonds. The proceeds of these bonds are to be used in connection with the remodel and construction of Piute High School located in Junction, Utah. The bonds will mature on April 15, 2027. However, the District is required to make annual deposits to a sinking fund account to be held by the paying agent. These bonds carry an annual interest rate of 7.89%. The District is required to make annual interest payments on the outstanding bonds; however, it is anticipated that annually the District will receive a subsidy from the Federal government to cover the interest payments up to 5.80%. The required debts service schedule is as follows:

Fiscal Year Ending June 30,	\$1,065,000 Series 2010		Federal Interest Subsidy (1)	Estimated Annual Contributions to Sinking Fund (2)	Total Payment Required for Debt Service (2)
	Principal	Interest			
2022	-	\$ 84,029	\$ (61,770)	\$ 62,647	\$ 84,906
2023	-	\$ 84,029	\$ (61,770)	\$ 62,647	\$ 84,906
2024	-	\$ 84,029	\$ (61,770)	\$ 62,647	\$ 84,906
2025	-	\$ 84,029	\$ (61,770)	\$ 62,647	\$ 84,906
2026	-	\$ 84,029	\$ (61,770)	\$ 62,647	\$ 84,906
2027	\$ 1,065,000	\$ 84,029	\$ (61,770)	\$ 62,648	\$ 84,907
Totals	\$ 1,065,000	\$ 504,174	\$ (370,620)	\$ 375,883	\$ 509,437

(1) Assumes interest due will be paid from the federal interest rate subsidy up to 5.8%.

(2) The District will contribute \$62,647 annually to a sinking fund account.

The balance in the sinking fund account at June 30, 2021 is \$689,814.

**Piute County School District
Notes To Financial Statements
June 30, 2021**

7. LONG-TERM DEBT (Continued)

Note Payable – During the year ending June 30, 2012 the District obtained a loan from the Utah State Department of Finance for energy improvements made on the remodel of the high school. The note does not bear interest and is payable over a 12 year period. Debt service requirements are as follows:

Fiscal Year Ending June 30,	\$250,000 Note Payable		Total Payment Required for Debt Service
	Principal	Fee	
2022	\$ 20,833	\$ 125	\$ 20,958
2023	\$ 20,833	\$ 125	\$ 20,958
2024	\$ 20,837	\$ 125	\$ 20,962
Totals	\$ 62,503	\$ 375	\$ 62,878

Obligations Under Capital Lease – In FY18 the district made the final payment on a capital lease for a school bus originally purchased in FY14. The district has no remaining obligations under capital leases.

**Piute County School District
Notes To Financial Statements
June 30, 2021**

8. COMMITTED FOR ECONOMIC STABILIZATION

Utah State law allows for the establishment of an undistributed reserve. The Board of Education must authorize expenditures from the undistributed reserve. This reserve is for contingencies. According to State law, the District may not use undistributed reserves in the negotiation or settlement of contract salaries for District employees. The undistributed reserve may not exceed 5% of the current fiscal year's total general fund budgeted revenues. Use of the reserve requires a written resolution adopted by a majority vote of the Board filed with Utah State Board of Education and State Auditor.

9. GRANTS

The District receives significant financial assistance from Federal and State governmental agencies in the form of grants. The disbursement of funds received under these programs generally requires compliance with terms and conditions specified in the grant agreements and are subject to audit by the District's independent auditors and other governmental auditors. Any disallowed claims resulting from such audits could become a liability of the general fund or other applicable fund. Based on prior experience, District administration believes such disallowance, if any, would be immaterial.

10. INTER FUND RECEIVABLES, PAYABLES, AND TRANSFERS

The following fund transfers occurred during the year:

Fund	Transfer Out	Transfer In
General Fund	\$ (475,000)	-
Food Service Fund	-	\$ 75,000
Capital Projects Fund	\$ (82,553)	\$ 400,000
Municipal Building Fund	-	\$ 82,553
Totals	\$ (557,553)	\$ 557,553

The above transfers were made in the general course of annual operations.

**Piute County School District
Notes To Financial Statements
June 30, 2021**

10. INTER FUND RECEIVABLES, PAYABLES, AND TRANSFERS (Continued)

Governmental funds report revenue in connection with receivables for revenues that are not considered to be available to liquidate liabilities of the current period. Governmental funds also defer revenue recognition in connection with resources that have been received, but not yet earned. At the end of the fiscal year the various components of deferred inflows of resources and unearned revenue reported in the governmental funds consisted of the following:

Type	Unearned	Unavailable
Property Tax Receivable - General Fund	\$ 511,907	\$ 66,468
Property Tax Receivable - Debt Service Fund	\$ 160,000	\$ 28,510
Property Tax Receivable - Tax Increment Fund	\$ 979	\$ 44
Property Tax Receivable - Capital Projects Fund	\$ 10,068	\$ 2,046
Total Deferred/Unearned Revenue For Governmental Funds	\$ 682,954	\$ 97,068

**Piute County School District
Required Supplementary Information**

Piute County School District
Schedule of the Proportionate Share of the Net Pension Liability (Asset)
Utah Retirement Systems
Plan Years Ended December 31, 2014 Through 2020

Tier 1 Noncontributory System:	2020	2019	2018	2017	2016	2015	2014
District's proportion of the net pension liability (asset)	0.0576810%	0.0607372%	0.0568267%	0.0600970%	0.0615092%	0.0640098%	0.0636442%
District's proportion share of the net pension liability (asset)	\$768,958	\$1,349,399	\$2,114,247	\$1,469,589	\$1,993,462	\$2,010,731	\$1,599,079
District's covered employee payroll	\$1,498,229	\$1,595,813	\$1,560,080	\$1,637,388	\$1,698,077	\$1,740,367	\$1,769,266
District's proportionate share of the net pension liability (asset) as a percentage of it's covered employee payroll	51.32%	84.56%	135.5%	89.75%	117.40%	115.53%	90.4%
Plan fiduciary net position as a percentage of the total pension liability	94.3%	90.1%	84.1%	89.2%	84.9%	84.5%	87.2%
 Tier 2 Contributory System:							
District's proportion of the net pension liability (asset)	0.0341343%	0.0303096%	0.0360117%	0.0406717%	0.0383281%	0.037619%	0.0256555%
District's proportion share of the net pension liability (asset)	\$4,909	\$6,817	\$15,423	\$3,586	\$4,275	(\$82)	(\$777)
District's covered employee payroll	\$546,342	\$422,273	\$424,663	\$399,629	\$314,321	\$242,938	\$125,991
District's proportionate share of the net pension liability (asset) as a percentage of it's covered employee payroll	0.90%	1.61%	3.60%	0.90%	1.36%	-0.03%	-0.6%
Plan fiduciary net position as a percentage of the total pension liability	98.3%	96.5%	90.8%	97.4%	95.1%	100.2%	103.5%

Note: The schedule only presents information from 2014 to 2020; prior-year information is not available.

**Piute County School District
Schedule of District Contributions
Utah Retirement Systems
Years Ended June 30, 2014 - 2021**

As of fiscal year ended June 30*	Actuarial Determined Contributions	Contributions in relation to the contractually required contribution	Contribution deficiency (excess)	Covered Payroll	Contributions as a percentage of covered payroll
Noncontributory System					
2021	\$336,508	\$336,508	-	\$1,534,821	21.92%
2020	\$344,963	\$344,963	-	\$1,569,059	21.99%
2019	\$348,126	\$348,126	-	\$1,587,257	21.93%
2018	\$343,539	\$343,539	-	\$1,567,366	21.92%
2017	\$361,439	\$361,439	-	\$1,665,338	21.70%
2016	\$377,629	\$377,629	-	\$1,724,109	21.90%
2015	\$382,938	\$382,938	-	\$1,769,329	21.64%
2014	\$350,186	\$350,186	-	\$1,757,961	19.92%
Tier 2 Public Employees System					
2021	\$133,767	\$133,767	-	\$699,921	1,911.00%
2020	\$82,413	\$82,413	-	\$436,113	18.90%
2019	\$77,911	\$77,911	-	\$414,548	18.79%
2018	\$79,284	\$79,284	-	\$431,096	18.39%
2017	\$64,254	\$64,254	-	\$352,271	18.24%
2016	\$51,679	\$51,679	-	\$283,264	18.24%
2015	\$34,920	\$34,920	-	\$192,426	18.15%
2014	\$10,276	\$10,276	-	\$68,861	14.92%
Tier 2 Public Employees DC Only System**					
2021	\$6,184	\$6,184	-	\$61,716	10.02%
2020	\$3,581	\$3,581	-	\$35,743	10.02%
2019	\$1,464	\$1,464	-	\$14,613	10.02%
2018	\$1,385	\$1,385	-	\$13,823	10.02%
2017	\$1,405	\$1,405	-	\$14,025	10.02%
2016	\$2,055	\$2,055	-	\$20,482	10.03%
2015	\$6,482	\$6,482	-	\$67,381	9.62%
2014	\$4,987	\$4,987	-	\$60,929	8.20%

* These schedules only present information for the District's 2015 and subsequent reporting periods; prior-year information is not available.

** Contributions in Tier 2 include an amortization rate to help fund the unfunded liabilities in the Tier 1 systems. Tier 2 systems were created July 1, 2011.

Paragraph 81.b of GASB 68 requires employers to disclose a 10-year history of contributions in RSI. Contributions as a percentage of covered payroll may be different than the board certified rate due to rounding and other administrative practices.

**Piute County School District
Notes to Required Supplementary Information
June 30, 2021**

Note A. Changes in Assumptions-Utah Retirement Systems

There were a number of demographic assumptions (e.g. rates of termination, disability, retirement, as well as an updated mortality and salary increase assumption) updated for use in the January 1, 2020 actuarial valuation. These assumption updates were adopted by the Utah State Retirement Board as a result of an Actuarial Experience Study performed for the Utah Retirement Systems. In aggregate, those assumption changes resulted in a \$201 million increase in the Total Pension Liability, which is about 0.50% of the Total Pension Liability of as December 31, 2019 for all systems combined. The Actuarial Experience Study report as of December 31, 2019 provides detailed information regarding those assumption changes, which may be accessed online at newsroom.urs.org under the "Retirement Office" column using the "Reports and Stats" tab.

NON-MAJOR GOVERNMENTAL FUNDS

Special Revenue Funds

School Lunch Fund – This fund is used to account for the food service activities of the District as required by state and federal law. Financing is provided by local sales along with substantial subsidies from the State of Utah and the U.S. Government to help ensure that students receive low cost, nutritionally balanced meals.

Scholarship Fund – This fund is used to account for a perpetual scholarship fund for graduating seniors.

Student Activity Fund – This fund is used to account for fees, revenues, and expenditures related to student activity funds at the school level.

Municipal Building Authority – This fund is used to account for lease revenue payments from the District that are paid to the MBA and are in turn used to service the debt associated with the lease revenue bonds issued in 2010.

Piute County School District
Combining Balance Sheet
Non-major Governmental Funds
June 30, 2021

	Special Revenue				Tax Increment Fund	Total Non- major Governme ntal Funds
	School Lunch Fund	Scholarship Fund	Municipal Building Authority	Student Activity Fund		
Assets:						
Cash & Investments	7,853	105,158	-	135,157	-	248,168
Cash & Investments Restricted	-	-	689,824	-	-	689,824
Receivables:					1,016	1,016
Other Governments	14,110	-	-	-	-	14,110
Inventory	4,315	-	-	-	-	4,315
Due From Other Funds	-	-	-	-	-	-
Total Assets	<u>26,278</u>	<u>105,158</u>	<u>689,824</u>	<u>135,157</u>	<u>1,016</u>	<u>957,433</u>
Liabilities:						
Accounts Payable	-	-	-	-	-	-
Due To Other Funds	-	-	-	-	-	-
Unearned Revenue:						
Other Governments	-	-	-	-	-	-
Deferred Property Taxes	-	-	-	-	1,016	1,016
Total Liabilities	<u>0</u>	<u>0</u>	<u>0</u>	<u>0</u>	<u>1,016</u>	<u>1,016</u>
Fund Balances:						
Non Spendable:						
Inventories	4,315	-	-	-	-	4,315
Restricted For:						
Food Services	21,963	-	-	-	-	21,963
Debt Service	-	-	689,824	-	-	689,824
Other	-	105,158	-	-	-	105,158
Committed To:						
Schools	-	-	-	135,157	-	135,157
Other	-	-	-	-	-	-
Unassigned:	-	-	-	-	-	-
Total Fund Balances	<u>26,278</u>	<u>105,158</u>	<u>689,824</u>	<u>135,157</u>	<u>0</u>	<u>956,417</u>
Total Liabilities And Fund Balances	<u>26,278</u>	<u>105,158</u>	<u>689,824</u>	<u>135,157</u>	<u>1,016</u>	<u>957,433</u>

Piute County School District
Combining Statement of Revenues, Expenditures, and Changes in Fund Balances
Non-major Governmental Funds
Year Ended June 30, 2021

	Special Revenue				Total Non-major Governmental Funds	
	School Lunch Fund	Scholarship Fund	Municipal Building Authority	Student Activity Fund		Tax Increment Fund
Revenues:						
Property Taxes	-	-	-	-	640	640
Earnings On Investments	-	12,595	3,326	119	-	16,040
School Lunch Sales	8,160	-	-	-	-	8,160
Student Fees	-	-	-	166,332	-	166,332
Other Local Sources	-	-	-	-	-	0
State Aid	46,614	-	-	-	-	46,614
Federal Aid	212,504	-	58,310	-	-	270,814
Total Revenues	<u>267,278</u>	<u>12,595</u>	<u>61,636</u>	<u>166,451</u>	<u>640</u>	<u>508,600</u>
Expenditures:						
Current:						
Instructional Services	-	0	-	146,302	-	146,302
Supporting Services:						
Other	-	-	-	-	640	640
School Lunch Services	362,999	-	-	-	-	362,999
Debt Service:						
Principal Retirement	-	-	-	-	-	0
Interest Payments	-	-	84,029	-	-	84,029
Total Expenditures	<u>362,999</u>	<u>0</u>	<u>84,029</u>	<u>146,302</u>	<u>640</u>	<u>593,970</u>
Excess (Deficiency) Of Revenues Over (Under) Expenditures	<u>(95,721)</u>	<u>12,595</u>	<u>(22,393)</u>	<u>20,149</u>	<u>0</u>	<u>(85,371)</u>
Other Financing Sources:						
Transfers In (Out)	75,000	-	82,553	-	-	157,553
Total Other Financing Sources	<u>75,000</u>	<u>0</u>	<u>82,553</u>	<u>0</u>	<u>0</u>	<u>157,553</u>
Net Changes In Fund Balances	<u>(20,721)</u>	<u>12,595</u>	<u>60,160</u>	<u>20,149</u>	<u>0</u>	<u>72,182</u>
Beginning Fund Balances	<u>46,999</u>	<u>92,563</u>	<u>629,664</u>	<u>115,008</u>	<u>0</u>	<u>884,234</u>
Ending Fund Balances	<u>26,278</u>	<u>105,158</u>	<u>689,824</u>	<u>135,157</u>	<u>0</u>	<u>956,417</u>

Piute County School District
Schedule of Revenues, Expenditures, and Changes in Fund Balances - Budget and Actual
School Lunch Fund
Non-major Special Revenue Fund
Year Ended June 30, 2021

	2021			2020	
	Original Budgeted Amounts	Final Budgeted Amounts	Actual Amounts	Variance with Final Budget +/-	Actual Amounts
Revenues:					
Local Sources:					
Lunch Sales - Students	30,500	1,573	1,302	-271	24,249
Lunch Sales - Adults	7,000	5,850	6,569	719	4,817
Other Local Sales	-	-	290	-	-
Total Local Sources	<u>37,500</u>	<u>7,423</u>	<u>8,160</u>	<u>447</u>	<u>29,065</u>
State Sources:					
State Lunch Program	38,000	50,000	46,614	(3,386)	45,642
Total State Sources	<u>38,000</u>	<u>50,000</u>	<u>46,614</u>	<u>(3,386)</u>	<u>45,642</u>
Federal Sources:					
CNP Grant Revenue	0	0	12,405	12,405	0
Federal Lunch Program	38,000	26,000	26,901	901	26,895
Free & Reduced Assistance	78,000	135,000	135,562	562	101,162
Federal Breakfast Program	25,000	43,000	37,636	(5,364)	40,442
Total Federal Sources	<u>141,000</u>	<u>204,000</u>	<u>212,504</u>	<u>-3,901</u>	<u>168,499</u>
Total Revenues	<u>216,500</u>	<u>261,423</u>	<u>267,278</u>	<u>-6,840</u>	<u>243,206</u>
Expenditures:					
Current:					
Salaries	90,400	96,127	96,199	(72)	103,171
Employee Benefits	19,000	19,670	20,291	(621)	21,351
Purchased Services	2,500	1,960	460	1,500	1,377
Supplies	1,750	14,550	28,615	(14,065)	21,989
Food	149,500	228,000	204,451	23,549	167,710
Other	25,000	12,983	12,983	0	8,817
Total Expenditures	<u>288,150</u>	<u>373,290</u>	<u>362,999</u>	<u>10,291</u>	<u>324,415</u>
Excess (Deficiency) Of Revenues Over (Under) Expenditures	<u>(71,650)</u>	<u>(111,867)</u>	<u>(95,721)</u>	<u>16,146</u>	<u>(81,209)</u>
Other Financing Sources:					
Transfers In (Out)	65,000	75,000	75,000	0	95,000
Total Other Financing Sources	<u>65,000</u>	<u>75,000</u>	<u>75,000</u>	<u>0</u>	<u>95,000</u>
Net Changes In Fund Balances	<u>(6,650)</u>	<u>(36,867)</u>	<u>(20,721)</u>	<u>16,146</u>	<u>13,791</u>
Beginning Fund Balances	<u>11,022</u>	<u>46,999</u>	<u>46,999</u>	<u>-</u>	<u>33,209</u>
Ending Fund Balances	<u>4,372</u>	<u>10,132</u>	<u>26,278</u>	<u>16,146</u>	<u>46,999</u>

Piute County School District
Schedule of Revenues, Expenditures, and Changes in Fund Balances - Budget and Actual
Student Activity Fund
Non-major Special Revenue Fund
Year Ended June 30, 2021
With Comparative Totals for 2020

	2021			2020	
	Original Budgeted Amounts	Final Budgeted Amounts	Actual Amounts	Variance with Final Budget +/-	Actual Amounts
Revenues:					
Local Sources:					
Earnings On Investments	-	185	119	(66)	192
Student Fees	225,150	175,000	166,332	(8,668)	204,868
Total Local Sources	<u>225,150</u>	<u>175,185</u>	<u>166,451</u>	<u>(8,734)</u>	<u>205,060</u>
Total Revenues	<u>225,150</u>	<u>175,185</u>	<u>166,451</u>	<u>(8,734)</u>	<u>205,060</u>
Expenditures:					
Current:					
Supplies	225,000	175,000	146,302	28,698	177,249
Total Expenditures	<u>225,000</u>	<u>175,000</u>	<u>146,302</u>	<u>28,698</u>	<u>177,249</u>
Excess (Deficiency) Of Revenues Over (Under) Expenditures	<u>150</u>	<u>185</u>	<u>20,149</u>	<u>19,964</u>	<u>27,811</u>
Other Financing Sources:					
Transfers In (Out)	-	-	-	-	-
Total Other Financing Sources	<u>0</u>	<u>0</u>	<u>0</u>	<u>0</u>	<u>0</u>
Net Changes In Fund Balances	<u>150</u>	<u>185</u>	<u>20,149</u>	<u>19,964</u>	<u>27,811</u>
Beginning Fund Balances	<u>87,197</u>	<u>115,008</u>	<u>115,008</u>	<u>-</u>	<u>87,197</u>
Ending Fund Balances	<u>87,347</u>	<u>115,193</u>	<u>135,157</u>	<u>19,964</u>	<u>115,008</u>

Piute County School District
Schedule of Revenues, Expenditures, and Changes in Fund Balances - Budget and Actual
Municipal Building Authority Fund
Non-major Special Revenue Fund
Year Ended June 30, 2021
With Comparative Totals for 2020

	2021			Variance with Final Budget +/-	2020
	Original Budgeted Amounts	Final Budgeted Amounts	Actual Amounts		Actual Amounts
Revenues:					
Earnings On Investments	8,000	4,000	3,326	(674)	13,196
Federal Interest Subsidy	58,115	58,310	58,310	0	58,033
Total Revenues	<u>66,115</u>	<u>62,310</u>	<u>61,636</u>	<u>(674)</u>	<u>71,229</u>
Expenditures:					
Debt Service:					
Bond Interest	84,029	84,029	84,029	(0)	84,029
Total Expenditures	<u>84,029</u>	<u>84,029</u>	<u>84,029</u>	<u>(0)</u>	<u>84,029</u>
Excess (Deficiency) Of Revenues Over (Under) Expenditures	<u>(17,914)</u>	<u>(21,719)</u>	<u>(22,393)</u>	<u>-674</u>	<u>(12,800)</u>
Other Financing Sources:					
Transfers In (Out)	80,000	82,553	82,553	0	73,234
Total Other Financing Sources	<u>80,000</u>	<u>82,553</u>	<u>82,553</u>	<u>0</u>	<u>73,234</u>
Net Changes In Fund Balances	<u>62,086</u>	<u>60,834</u>	<u>60,160</u>	<u>(674)</u>	<u>60,434</u>
Beginning Fund Balances	<u>636,141</u>	<u>629,664</u>	<u>629,664</u>	<u>-</u>	<u>569,230</u>
Ending Fund Balances	<u>698,227</u>	<u>690,498</u>	<u>689,824</u>	<u>(674)</u>	<u>629,664</u>

Piute County School District
Schedule of Revenues, Expenditures, and Changes in Fund Balances - Budget and Actual
Scholarship Fund
Non-major Special Revenue Fund
Year Ended June 30, 2021
With Comparative Totals for 2020

	2021				2020
	Original Budgeted Amounts	Final Budgeted Amounts	Actual Amounts	Variance with Final Budget +(-)	Actual Amounts
Revenues:					
Earnings On Investments	4,500	13,195	12,595	(600)	(2,813)
Contributions	-	-	-	-	-
Total Revenues	<u>4,500</u>	<u>13,195</u>	<u>12,595</u>	<u>(600)</u>	<u>(2,813)</u>
Expenditures:					
Current:					
Scholarships	2,500	5,000	0	(5,000)	5,000
Total Expenditures	<u>2,500</u>	<u>5,000</u>	<u>0</u>	<u>(5,000)</u>	<u>5,000</u>
Excess (Deficiency) Of Revenues Over (Under) Expenditures	<u>2,000</u>	<u>8,195</u>	<u>12,595</u>	<u>4,400</u>	<u>(7,813)</u>
Other Financing Sources:					
Transfers In (Out)	-	-	-	-	-
Total Other Financing Sources	<u>0</u>	<u>0</u>	<u>0</u>	<u>0</u>	<u>0</u>
Net Changes In Fund Balances	<u>2,000</u>	<u>8,195</u>	<u>12,595</u>	<u>4,400</u>	<u>(7,813)</u>
Beginning Fund Balances	<u>94,876</u>	<u>92,563</u>	<u>92,563</u>	<u>-</u>	<u>100,376</u>
Ending Fund Balances	<u>96,876</u>	<u>100,758</u>	<u>105,158</u>	<u>4,400</u>	<u>92,563</u>

MAJOR GOVERNMENTAL FUNDS

General Fund – This fund services primary on-going operation of the District. It is used to account for activity and financial resources that are not required to be accounted for in other funds.

Debt Service Fund - The Debt Service Fund is used to account for the receipt of property taxes levied for retirement of general obligation debt. The expenditures are for principal retirement and for payment of interest and fees.

Capital Projects Fund - The Capital Projects Fund is used to account for the costs incurred in acquiring and improving sites, constructing and remodeling facilities, and procuring equipment necessary for providing educational programs for all students within the District. Financing is provided by an annual property tax levy. Also, state funds can be obtained by qualifying under guidelines established for districts determined to be in critical need for construction building aid.

Piute County School District
Schedule of Revenues, Expenditures, and Changes in Fund Balances - Budget and Actual
Major Debt Service Fund
Year Ended June 30, 2021
With Comparative Totals for 2020

	2021				2020
	Original Budgeted Amounts	Final Budgeted Amounts	Actual Amounts	Variance with Final Budget +/-	Actual Amounts
Revenues:					
Property Tax	188,329	225,100	219,351	(5,749)	222,709
Earnings On Investments	32,000	17,000	14,000	(3,000)	54,619
Federal Interest Subsidy	237,750	237,750	238,943	1,193	237,918
Total Revenues	458,079	479,850	472,294	-7,556	515,246
Expenditures:					
Debt Service:					
Bond Principal	-	-	-	-	-
Bond Interest	253,239	253,239	253,240	(1)	253,714
Misc Bond Expense	2,500	2,500	500	2,000	-
Total Expenditures	255,739	255,739	253,740	1,999	253,714
Excess (Deficiency) Of Revenues Over (Under) Expenditures	202,340	224,111	218,554	-5,557	261,532
Other Financing Sources:					
Bond Proceeds	-	-	-	-	-
Total Other Financing Sources	0	0	0	0	0
Net Changes In Fund Balances	202,340	224,111	218,554	-5,557	261,532
Beginning Fund Balances	3,262,386	3,267,361	3,267,361	-	3,005,829
Ending Fund Balances	3,464,726	3,491,472	3,485,915	-5,557	3,267,361

Piute County School District
Schedule of Revenues, Expenditures, and Changes in Fund Balances - Budget and Actual
Major Capital Projects Fund
Year Ended June 30, 2021
With Comparative Totals for 2020

	2021				2020
	Original Budgeted Amounts	Final Budgeted Amounts	Actual Amounts	Variance with Final Budget +/-	Actual Amounts
Revenues:					
Local Sources:					
Property Taxes	13,150	16,220	14,513	(1,707)	15,656
Other Local Sources	-	0	0	0	5,995
Total Local Sources	13,150	16,220	14,513	(1,707)	21,651
State Sources:					
Capital Outlay Foundation	100,000	200,000	200,000	0	100,000
Total State Sources	100,000	200,000	200,000	0	100,000
Federal Sources:					
Secure Rural Schools	-	56,651	56,651	0	99,762
Total Federal Sources	0	56,651	56,651	0	99,762
Total Revenues	113,150	272,871	271,164	(1,707)	221,413
Expenditures:					
Land & Buildings:					
Land Improvements	-	-	-	-	-
Building Improvements	251,500	220,000	175,665	44,335	114,928
Total Land & Buildings	251,500	220,000	175,665	44,335	114,928
Equipment:					
Equipment	-	1,500	1,500	0	13,450
Debt Principal & Fees	20,958	20,958	21,083	125	21,146
Buses	0	137,716	137,716	0	0
Total Equipment	20,958	160,174	160,299	125	34,596
Total Expenditures	272,458	380,174	335,964	44,460	149,524
Excess (Deficiency) Of Revenues Over (Under) Expenditures	(159,308)	(107,303)	(64,800)	42,503	71,889
Other Financing Sources:					
Transfers In	400,000	400,000	400,000	-	500,000
Transfers Out	(80,000)	(82,553)	(82,553)	0	(73,234)
Total Other Financing Sources	320,000	317,447	317,447	0	426,766
Net Changes In Fund Balances	160,692	210,144	252,647	42,503	498,655
Beginning Fund Balances	736,566	997,827	997,827	-	499,172
Ending Fund Balances	897,258	1,207,971	1,250,474	42,503	997,827

This Page Left Intentionally Blank



Statistical Section

Pages 64 - 71

These schedules contain trend information to help the reader understand how the Districts financial performance and well-being have changed over time.

Comparative Statements of Net Position	64
Net Position By Component	65
Changes in Net Position.....	66
Fund Balances, Governmental Funds	67
Changes in Fund Balances, Governmental Funds	68
Revenue by Source, General Fund	69
Expenditures by Function, General Fund	70
Property Taxes: Direct and Overlapping Governments.....	71

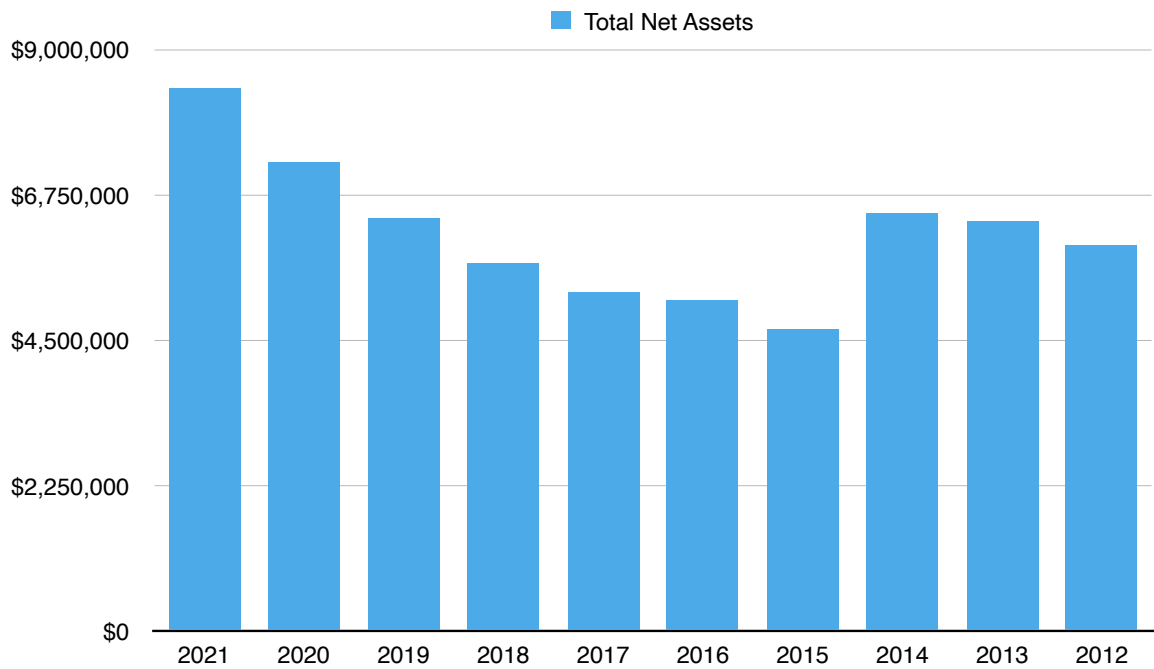
Piute County School District
Comparative Statements of Net Position
Last Ten Fiscal Years

	2021	2020	2019	2018	2017	2016	2015	2014	2013	2012
Assets										
Cash and Investments	\$ 4,159,325	\$ 3,886,780	\$ 3,449,473	\$ 2,814,435	\$ 2,772,561	\$ 3,256,609	\$ 3,019,300	\$ 3,257,668	\$ 3,206,476	\$ 3,125,969
Cash and Investments Restricted	\$ 3,774,240	\$ 3,463,437	\$ 3,104,404	\$ 2,779,832	\$ 2,273,620	\$ 1,946,457	\$ 1,620,380	\$ 1,296,061	\$ 972,138	\$ 647,610
Receivables										
Property Taxes	\$ 846,074	\$ 819,260	\$ 828,384	\$ 763,364	\$ 705,011	\$ 738,724	\$ 683,056	\$ 648,602	\$ 580,739	\$ 574,909
Other Governments	\$ 343,351	\$ 361,620	\$ 316,546	\$ 325,186	\$ 257,201	\$ 232,119	\$ 249,598	\$ 94,260	\$ 145,580	\$ 77,528
Other Receivables	\$ 17,334	\$ 36,020	\$ 0	\$ 0	\$ 0	\$ 0	\$ 0	\$ 35,344	\$ 35,344	\$ 35,344
Inventories	\$ 4,315	\$ 4,795	\$ 4,994	\$ 4,802	\$ 4,618	\$ 4,440	\$ 4,275	\$ 4,150	\$ 3,050	\$ 3,310
Net Pension Asset	\$ 0	\$ 0	\$ 0	\$ 0	\$ 0	\$ 82	\$ 777			
Net Bond Issuance Costs										\$ 141,152
Capital Assets (Net of Accumulated Depreciation)										
Land and Construction Progress	\$ 125,000	\$ 125,000	\$ 125,000	\$ 125,000	\$ 125,000	\$ 125,000	\$ 125,000	\$ 125,000	\$ 125,000	\$ 6,207,222
Other Capital Assets*	\$ 7,472,006	\$ 7,292,158	\$ 7,324,571	\$ 7,576,463	\$ 7,803,786	\$ 7,780,965	\$ 7,986,910	\$ 8,113,551	\$ 8,338,166	\$ 2,365,191
Total Assets	\$ 16,741,645	\$ 15,989,070	\$ 15,153,372	\$ 14,389,082	\$ 13,941,797	\$ 14,084,396	\$ 13,689,296	\$ 13,574,636	\$ 13,406,493	\$ 13,178,235
Deferred Outflows Related to Pensions	\$ 419,465	\$ 314,065	\$ 800,897	\$ 828,644	\$ 806,321	\$ 741,604	\$ 239,068			
Liabilities										
Accounts Payable	\$ 333,840	\$ 392,044	\$ 427,176	\$ 328,884	\$ 226,259	\$ 275,973	\$ 240,883	\$ 181,576	\$ 176,799	\$ 292,801
Accrued Interest	\$ 61,511	\$ 61,511	\$ 61,511	\$ 61,511	\$ 61,994	\$ 62,561	\$ 63,066	\$ 64,761	\$ 51,564	\$ 50,695
Accrued Salaries	\$ 218,426	\$ 184,216	\$ 183,039	\$ 179,498	\$ 252,287	\$ 256,831	\$ 206,999	\$ 204,211	\$ 183,852	\$ 252,601
Unearned Revenue										
Other Governments	\$ 20,612	\$ 20,962	\$ 68,161	\$ 104,610	\$ 38,500	\$ 0	\$ 0	\$ 25,000	\$ 0	\$ 24,816
Noncurrent Liabilities										
Due Within One Year	\$ 45,833	\$ 45,833	\$ 44,083	\$ 44,083	\$ 89,277	\$ 41,368	\$ 40,818	\$ 58,863	\$ 57,715	\$ 38,079
Due In More Than One Year	\$ 6,525,528	\$ 7,171,698	\$ 7,972,015	\$ 7,373,179	\$ 7,947,482	\$ 8,190,119	\$ 7,888,087	\$ 5,980,596	\$ 6,027,224	\$ 5,973,592
Total Liabilities	\$ 7,205,750	\$ 7,876,264	\$ 8,755,985	\$ 8,091,765	\$ 8,615,799	\$ 8,826,852	\$ 8,439,853	\$ 6,515,007	\$ 6,497,154	\$ 6,632,584
Deferred Inflows of Resources										
Deferred Inflows Related to Pensions	\$ 875,489	\$ 503,197	\$ 139,114	\$ 786,478	\$ 295,977	\$ 198,141	\$ 149,878			
Property Taxes Levied for Future Year	\$ 682,991	\$ 654,418	\$ 649,298	\$ 643,769	\$ 633,412	\$ 663,762	\$ 668,306	\$ 587,312	\$ 580,739	\$ 574,909
Total Deferred Inflows of Resources	\$ 1,558,480	\$ 1,157,615	\$ 788,412	\$ 1,430,247	\$ 929,389	\$ 861,903	\$ 818,184	\$ 587,312	\$ 580,739	\$ 574,909
Net Position:										
Net Investment in Capital Assets	\$ 2,034,503	\$ 1,833,821	\$ 1,845,401	\$ 2,076,460	\$ 2,262,256	\$ 2,197,662	\$ 2,363,173	\$ 2,430,566	\$ 2,597,466	\$ 2,768,634
Restricted for:										
School Lunch	\$ 26,278	\$ 46,998	\$ 33,208	\$ 16,378	\$ 18,619	\$ 14,599	\$ 9,449	\$ 11,725	\$ 6,587	\$ 4,462
Non-K12 Programs	\$ 0	\$ 0	\$ 0	\$ 0	\$ 0	\$ 0	\$ 0	\$ 75,375	\$ 94,408	\$ 77,044
Student Activity Fund	\$ 135,157	\$ 115,008	\$ 87,197	\$ 55,914	\$ 82,401	\$ 79,561	\$ 63,930	\$ 89,964	\$ 90,141	\$ 76,985
Scholarship Fund	\$ 105,158	\$ 92,564	\$ 100,376	\$ 96,263	\$ 89,096	\$ 94,963	\$ 82,514	\$ 77,660	\$ 69,491	\$ 59,689
Debt Service	\$ 4,114,228	\$ 3,835,515	\$ 3,513,548	\$ 3,159,225	\$ 2,828,997	\$ 2,456,118	\$ 2,088,088	\$ 1,717,471	\$ 1,363,909	\$ 955,458
Capital Projects	\$ 1,250,474	\$ 997,827	\$ 499,172	\$ 325,384	\$ 248,806	\$ 574,188	\$ 612,498	\$ 185,830	\$ 246,693	\$ 244,813
Unrestricted	\$ 731,082	\$ 347,522	\$ 320,970	\$ (33,912)	\$ (292,746)	\$ (279,847)	\$ (549,326)	\$ 1,883,725	\$ 1,859,904	\$ 1,783,656
Total Net Position	\$ 8,396,880	\$ 7,269,255	\$ 6,399,872	\$ 5,695,712	\$ 5,237,429	\$ 5,137,244	\$ 4,670,326	\$ 6,472,316	\$ 6,328,599	\$ 5,970,741

Source: Information taken from the District's audited financial statements. This summary itself has not been audited.

**Piute County School District
Net Position by Component
Last Ten Fiscal Years**

Fiscal Year Ended	Invested in Capital Assets, Net of Related Debt	Restricted	Unrestricted	Total Net Assets
2021	\$ 2,034,503	\$ 5,631,295	\$ 731,082	\$ 8,396,879
2020	\$ 1,833,821	\$ 5,087,911	\$ 347,522	\$ 7,269,254
2019	\$ 1,845,401	\$ 4,233,500	\$ 320,970	\$ 6,399,871
2018	\$ 2,076,460	\$ 3,194,881	\$ (33,912)	\$ 5,695,712
2017	\$ 2,262,256	\$ 3,267,919	\$ (292,746)	\$ 5,237,429
2016	\$ 2,197,662	\$ 3,219,429	\$ (279,847)	\$ 5,137,244
2015	\$ 2,363,173	\$ 2,856,479	\$ (549,326)	\$ 4,670,326
2014	\$ 2,430,566	\$ 2,158,025	\$ 1,883,725	\$ 6,472,316
2013	\$ 2,597,466	\$ 1,871,229	\$ 1,859,904	\$ 6,328,599
2012	\$ 2,768,634	\$ 1,418,451	\$ 1,783,656	\$ 5,970,741



Source: District Data

Piute County School District
Changes in Net Position
Last Ten Fiscal Years

	2021	2020	2019	2018	2017	2016	2015	2014	2013	2012
Expenses										
Instruction	\$ 3,164,585	\$ 3,315,430	\$ 3,439,545	\$ 3,403,120	\$ 3,310,361	\$ 3,403,905	\$ 3,732,328	\$ 3,004,891	\$ 2,861,866	\$ 3,121,625
Support Services:										
Student Services	\$ 137,417	\$ 119,829	\$ 97,118							
Instructional Staff	\$ 91,932	\$ 18,225	\$ 4,619	\$ 19,060	\$ 19,894	\$ 19,906	\$ 19,527	\$ 9,977	\$ 15,248	\$ 21,048
District Administration	\$ 575,261	\$ 544,743	\$ 564,609	\$ 525,261	\$ 454,785	\$ 476,475	\$ 443,890	\$ 415,306	\$ 369,035	\$ 309,241
School Administration	\$ 281,852	\$ 266,985	\$ 234,170	\$ 143,453	\$ 209,750	\$ 170,815	\$ 222,747	\$ 219,548	\$ 211,112	\$ 128,184
Business	\$ 80,457	\$ 95,792	\$ 94,133	\$ 73,490	\$ 108,553	\$ 102,829	\$ 110,352	\$ 112,983	\$ 94,216	\$ 101,800
Operation & Maintenance of Plant	\$ 659,716	\$ 619,555	\$ 612,358	\$ 573,758	\$ 565,807	\$ 564,745	\$ 540,346	\$ 546,406	\$ 440,660	\$ 576,263
Transportation	\$ 320,110	\$ 268,677	\$ 319,231	\$ 297,919	\$ 303,832	\$ 281,611	\$ 317,989	\$ 356,657	\$ 437,023	\$ 313,690
Other	\$ 5,102				\$ 11,518					
School Lunch Services	\$ 360,640	\$ 329,838	\$ 271,700	\$ 265,972	\$ 252,901	\$ 251,686	\$ 241,512	\$ 245,418	\$ 238,872	\$ 237,944
Interest on Long Term Liabilities	\$ 341,496	\$ 341,470	\$ 342,015	\$ 341,363	\$ 341,280	\$ 342,600	\$ 341,336	\$ 356,608	\$ 341,821	\$ 340,016
Total Assets	\$ 6,018,568	\$ 5,920,544	\$ 5,979,498	\$ 5,643,396	\$ 5,578,681	\$ 5,614,572	\$ 5,970,027	\$ 5,267,794	\$ 5,009,853	\$ 5,149,811
Program Revenues										
Charges For Services	\$ 181,092	\$ 235,454	\$ 298,407	\$ 219,941	\$ 243,910	\$ 300,943	\$ 322,473	\$ 265,444	\$ 75,296	\$ 74,997
Operating Grants and Contributions	\$ 2,397,870	\$ 2,069,878	\$ 1,924,754	\$ 2,457,001	\$ 2,416,991	\$ 2,131,277	\$ 2,243,184	\$ 1,992,549	\$ 1,892,881	\$ 1,898,129
Capital Grants & Contributions	\$ 497,253	\$ 395,951	\$ 394,848	\$ 393,746	\$ 393,431	\$ 492,800	\$ 492,171	\$ 200,000	\$ 200,000	\$ 200,000
Total Program Revenues	\$ 3,076,215	\$ 2,701,283	\$ 2,618,009	\$ 3,070,688	\$ 3,054,332	\$ 2,925,020	\$ 3,057,828	\$ 2,457,993	\$ 2,168,177	\$ 2,173,126
General Revenues										
Property Taxes	\$ 808,804	\$ 815,022	\$ 798,946	\$ 779,091	\$ 798,105	\$ 881,081	\$ 771,636	\$ 770,714	\$ 827,955	\$ 712,297
Federal & State Aid Not Restricted To Specific Purposes	\$ 3,080,477	\$ 3,051,575	\$ 3,001,140	\$ 2,042,352	\$ 1,654,057	\$ 2,043,707	\$ 1,867,839	\$ 2,069,631	\$ 2,186,765	\$ 2,419,862
Earnings On Investments	\$ 40,216	\$ 94,763	\$ 113,823	\$ 70,912	\$ 34,471	\$ 33,309	\$ 19,668	\$ 22,665	\$ 26,637	\$ 15,965
Micellaneous	\$ 140,479	\$ 127,285	\$ 151,739	\$ 138,636	\$ 137,901	\$ 198,373	\$ 105,410	\$ 90,508	\$ 299,329	\$ 290,509
Total General Revenues	\$ 4,069,977	\$ 4,088,645	\$ 4,065,648	\$ 3,030,991	\$ 2,624,534	\$ 3,156,470	\$ 2,764,553	\$ 2,953,518	\$ 3,340,686	\$ 3,438,633
Total Revenues	\$ 7,146,192	\$ 6,789,928	\$ 6,683,657	\$ 6,101,679	\$ 5,678,866	\$ 6,081,490	\$ 5,822,381	\$ 5,411,511	\$ 5,508,863	\$ 5,611,759
Change In Net Position	\$ 1,127,624	\$ 869,384	\$ 704,159	\$ 458,283	\$ 100,185	\$ 466,918	\$ (147,646)	\$ 143,717	\$ 499,010	\$ 461,948
Net Position Beginning*	\$ 7,269,255	\$ 6,399,871	\$ 5,695,712	\$ 5,237,429	\$ 5,137,244	\$ 4,670,326	\$ 4,817,972	\$ 6,328,599	\$ 5,829,589	\$ 5,367,641
Net Position Ending	\$ 8,396,879	\$ 7,269,255	\$ 6,399,871	\$ 5,695,712	\$ 5,237,429	\$ 5,137,244	\$ 4,670,326	\$ 6,472,316	\$ 6,328,599	\$ 5,829,589

Source: District Data

Piute County School District
Fund Balances, Governmental Funds
Last Ten Fiscal Years

General Fund *

Fiscal Year Ended June 30,	Nonspendable	Restricted	Committed	Assigned	Unassigned	Total
2021	\$ 0	\$ 0	\$ 175,000	\$ 312,654	\$ 1,611,286	\$ 2,098,940
2020	\$ 0	\$ 0	\$ 175,000	\$ 211,774	\$ 1,650,535	\$ 2,037,309
2019	\$ 0	\$ 0	\$ 175,000	\$ 165,098	\$ 1,623,353	\$ 1,963,451
2018	\$ 0	\$ 0	\$ 175,000	\$ 174,215	\$ 1,273,187	\$ 1,622,402
2017	\$ 0	\$ 0	\$ 175,000	\$ 81,944	\$ 1,266,067	\$ 1,523,011
2016	\$ 0	\$ 0	\$ 175,000	\$ 103,624	\$ 1,373,382	\$ 1,652,006
2015	\$ 0	\$ 0	\$ 175,000	\$ 300,125	\$ 1,065,751	\$ 1,540,876
2014	\$ 0	\$ 0	\$ 510,500	\$ 42,971	\$ 1,561,729	\$ 2,115,200
2013	\$ 0	\$ 0	\$ 510,500	\$ 88,137	\$ 1,480,505	\$ 2,079,142
2012	\$ 0	\$ 0	\$ 566,983	\$ 97,694	\$ 1,185,720	\$ 1,850,397

All Other Governmental Funds *

Fiscal Year Ended June 30,	Nonspendable	Restricted	Committed	Assigned	Unassigned	Total
2021	\$ 4,315	\$ 5,553,334	\$ 135,157	\$ 0	\$ 0	\$ 5,692,806
2020	\$ 4,795	\$ 5,029,617	\$ 115,008	\$ 0	\$ 0	\$ 5,149,420
2019	\$ 4,994	\$ 4,202,824	\$ 87,197	\$ 0	\$ 0	\$ 4,295,015
2018	\$ 4,802	\$ 3,653,958	\$ 55,914	\$ 0	\$ 0	\$ 3,714,674
2017	\$ 4,618	\$ 3,242,894	\$ 82,401	\$ 0	\$ 0	\$ 3,329,913
2016	\$ 4,440	\$ 3,197,989	\$ 79,561	\$ 0	\$ 0	\$ 3,281,990
2015	\$ 4,275	\$ 2,851,340	\$ 63,930	\$ 0	\$ 0	\$ 2,919,545
2014	\$ 4,150	\$ 2,053,297	\$ 165,339	\$ 0	\$ 0	\$ 2,222,786
2013	\$ 3,050	\$ 1,735,194	\$ 184,549	\$ 0	\$ 0	\$ 1,922,793
2012	\$ 0	\$ 1,315,117	\$ 154,029	\$ 0	\$ 0	\$ 1,469,146

* GASB Statement 54 changed the required components of fund balance to: Nonspendable, Restricted, Committed, Assigned & Unassigned. Prior to GASB 54, the components of fund balance were: Reserved and Unreserved.

Source: District Data

Piute County School District
Changes in Fund Balances, Governmental Funds
Last Ten Fiscal Years

	2021	2020	2019	2018	2017	2016	2015	2014	2013	2012
Revenues:										
Property Taxes	\$ 845,323	\$ 789,145	\$ 785,000	\$ 729,439	\$ 801,763	\$ 833,294	\$ 771,636	\$ 770,714	\$ 827,955	\$ 712,297
Earnings On Investments	\$ 40,216	\$ 94,764	\$ 113,823	\$ 70,912	\$ 34,471	\$ 33,309	\$ 19,668	\$ 22,665	\$ 26,637	\$ 15,965
School Lunch Sales	\$ 8,160	\$ 29,065	\$ 41,534	\$ 34,314	\$ 33,455	\$ 33,545	\$ 29,979	\$ 32,606	\$ 32,834	\$ 32,819
Other Local Sources	\$ 313,411	\$ 333,673	\$ 408,612	\$ 324,263	\$ 348,356	\$ 465,771	\$ 397,904	\$ 323,346	\$ 341,791	\$ 332,687
State Aid	\$ 4,976,738	\$ 4,721,286	\$ 4,504,012	\$ 4,024,968	\$ 3,700,274	\$ 3,774,066	\$ 3,676,082	\$ 3,446,212	\$ 3,374,429	\$ 3,350,928
Federal Aid	\$ 998,862	\$ 796,118	\$ 816,730	\$ 868,131	\$ 764,205	\$ 893,718	\$ 927,112	\$ 815,968	\$ 905,217	\$ 1,167,063
Total Revenues	\$ 7,182,710	\$ 6,764,051	\$ 6,669,711	\$ 6,052,027	\$ 5,682,524	\$ 6,033,703	\$ 5,822,381	\$ 5,411,511	\$ 5,508,863	\$ 5,611,759
Expenditures:										
Current:										
Instructional Services	\$ 3,461,470	\$ 3,189,914	\$ 3,272,055	\$ 3,280,930	\$ 3,217,621	\$ 3,185,274	\$ 3,285,574	\$ 2,739,048	\$ 2,716,193	\$ 2,862,977
Support Services:										
Student Services	\$ 137,417	\$ 119,829	\$ 97,118							
Instructional Staff	\$ 95,087	\$ 17,450	\$ 4,250	\$ 19,624	\$ 19,692	\$ 20,325	\$ 20,979	\$ 9,977	\$ 15,248	\$ 21,048
District Administration	\$ 570,175	\$ 528,883	\$ 550,374	\$ 513,609	\$ 440,329	\$ 463,883	\$ 434,397	\$ 401,456	\$ 355,385	\$ 295,591
School Administration	\$ 275,592	\$ 263,727	\$ 229,511	\$ 159,967	\$ 211,344	\$ 194,723	\$ 227,914	\$ 209,856	\$ 201,530	\$ 121,602
Business	\$ 85,891	\$ 93,411	\$ 92,588	\$ 73,799	\$ 107,299	\$ 102,818	\$ 112,407	\$ 112,133	\$ 93,566	\$ 101,150
Operation and Maintenance of Facilities	\$ 630,630	\$ 578,872	\$ 574,453	\$ 538,068	\$ 526,401	\$ 527,203	\$ 505,903	\$ 507,606	\$ 405,854	\$ 544,457
Transportation	\$ 275,872	\$ 227,868	\$ 280,797	\$ 261,692	\$ 256,795	\$ 243,512	\$ 280,324	\$ 284,941	\$ 395,998	\$ 279,579
Other	\$ 5,102	\$ 420			\$ 11,517					
School Lunch Services	\$ 362,999	\$ 324,415	\$ 267,207	\$ 263,294	\$ 248,546	\$ 248,574	\$ 240,467	\$ 241,468	\$ 235,300	\$ 234,372
Capital Outlay	\$ 315,131	\$ 126,878	\$ 17,124	\$ 73,518	\$ 340,431	\$ 190,277	\$ 189,702	\$ 167,851	\$ 128,364	\$ 924,977
Debt Service:										
Principal Retirement	\$ 20,833	\$ 22,646	\$ 20,833	\$ 41,527	\$ 41,773	\$ 40,434	\$ 59,248	\$ 57,715	\$ 38,079	\$ 16,580
Interest and Fiscal Charges	\$ 341,496	\$ 341,472	\$ 342,015	\$ 341,846	\$ 341,847	\$ 343,105	\$ 343,031	\$ 343,411	\$ 340,952	\$ 340,395
Total Expenditures	\$ 6,577,695	\$ 5,835,784	\$ 5,748,325	\$ 5,567,874	\$ 5,763,595	\$ 5,560,128	\$ 5,699,946	\$ 5,075,462	\$ 4,926,469	\$ 5,742,728
Excess (Deficiency) of Revenues	\$ 605,015	\$ 928,268	\$ 921,386	\$ 484,153	\$ (81,071)	\$ 473,575	\$ 122,435	\$ 336,049	\$ 582,394	\$ (130,969)
Other Financing Sources:										
Transfers	\$ 0	\$ 0	\$ 0	\$ 0	\$ 0	\$ 0	\$ 0	\$ 0	\$ 0	\$ 0
Bond Proceeds	\$ 0	\$ 0	\$ 0	\$ 0	\$ 0	\$ 0	\$ 0	\$ 0	\$ 0	\$ 250,000
Execution of a Capital Lease	\$ 0	\$ 0	\$ 0	\$ 0	\$ 0	\$ 0	\$ 0	\$ 0	\$ 100,000	\$ 0
Total Other Financing	\$ 0	\$ 0	\$ 0	\$ 0	\$ 0	\$ 0	\$ 0	\$ 0	\$ 100,000	\$ 250,000
Net Change In Fund Balances	\$ 605,015	\$ 928,268	\$ 921,386	\$ 484,153	\$ (81,071)	\$ 473,575	\$ 122,435	\$ 336,049	\$ 682,394	\$ 119,031
Net Beginning Balances	\$ 7,186,731	\$ 6,258,463	\$ 5,337,077	\$ 4,852,924	\$ 4,933,996	\$ 4,460,421	\$ 4,337,986	\$ 4,001,937	\$ 3,319,543	\$ 3,200,512
Net Ending Balances	\$ 7,791,746	\$ 7,186,731	\$ 6,258,463	\$ 5,337,077	\$ 4,852,924	\$ 4,933,996	\$ 4,460,421	\$ 4,337,986	\$ 4,001,937	\$ 3,319,543

Source: Information taken from the District's audited financial statements. This summary itself has not been audited.

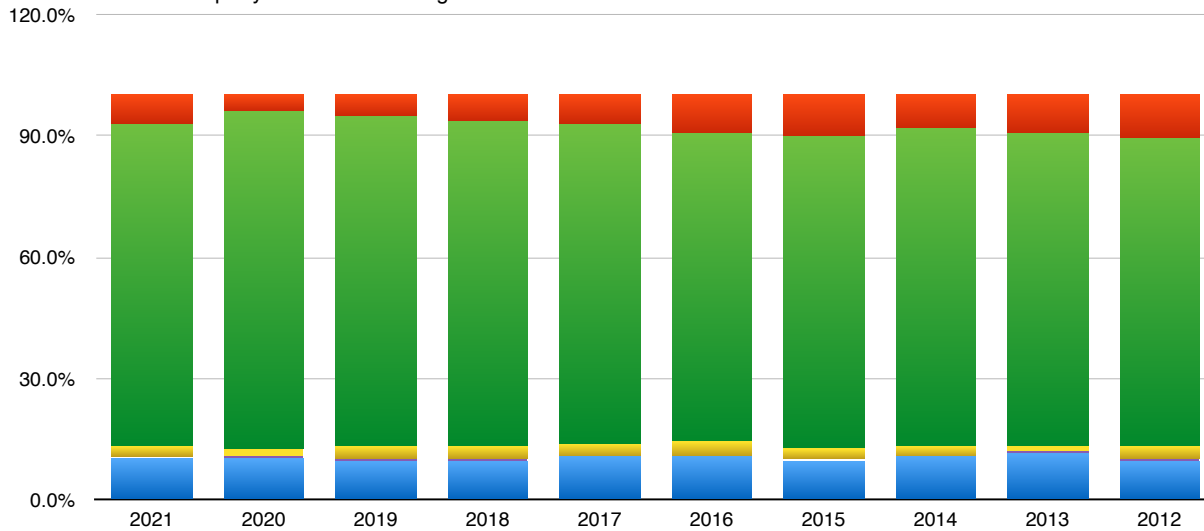
Piute County School District
Revenues by Source
General Fund
Last Ten Fiscal Years

Fiscal Year Ended June 30,	Property Taxes	Earning On Investments	Other Local	State Sources	Federal Sources	Total Revenue
2021	\$ 610,819	\$ 10,176	\$ 147,079	\$ 4,730,124	\$ 432,454	\$ 5,930,652
2020	\$ 550,360	\$ 29,569	\$ 122,810	\$ 4,575,644	\$ 231,906	\$ 5,510,289
2019	\$ 521,148	\$ 34,290	\$ 155,939	\$ 4,369,041	\$ 293,931	\$ 5,374,349
2018	\$ 458,207	\$ 22,202	\$ 145,346	\$ 3,895,342	\$ 309,810	\$ 4,830,907
2017	\$ 471,925	\$ 10,005	\$ 143,219	\$ 3,568,829	\$ 328,108	\$ 4,522,086
2016	\$ 497,299	\$ 8,364	\$ 159,961	\$ 3,542,936	\$ 446,869	\$ 4,655,429
2015	\$ 430,428	\$ 7,699	\$ 100,410	\$ 3,405,951	\$ 442,812	\$ 4,387,300
2014	\$ 426,668	\$ 9,210	\$ 90,508	\$ 3,192,357	\$ 350,944	\$ 4,069,687
2013	\$ 463,718	\$ 11,472	\$ 60,522	\$ 3,120,173	\$ 393,464	\$ 4,049,349
2012	\$ 393,966	\$ 12,209	\$ 123,272	\$ 3,080,627	\$ 427,395	\$ 4,037,469

Revenues By Source As A Percentage Of Total General Fund Revenue

Fiscal Year Ended June 30,	Property Taxes	Earning On Investments	Other Local	State Sources	Federal Sources	Total Revenue
2021	10.3%	0.2%	2.5%	79.8%	7.3%	100.0%
2020	10.0%	0.5%	2.2%	83.0%	4.2%	100.0%
2019	9.7%	0.6%	2.9%	81.3%	5.5%	100.0%
2018	9.5%	0.5%	3.0%	80.6%	6.4%	100.0%
2017	10.4%	0.2%	3.2%	78.9%	7.3%	100.0%
2016	10.7%	0.2%	3.4%	76.1%	9.6%	100.0%
2015	9.8%	0.2%	2.3%	77.6%	10.1%	100.0%
2014	10.5%	0.2%	2.2%	78.4%	8.6%	100.0%
2013	11.5%	0.3%	1.5%	77.1%	9.7%	100.0%
2012	9.8%	0.3%	3.1%	76.3%	10.6%	100.0%

■ Property Taxes
 ■ Earning On Investments
 ■ Other Local
 ■ State Sources
 ■ Federal Sources



Source: District Data

Piute County School District
Expenditures By Function
General Fund
Last Ten Fiscal Years

Fiscal Year Ended June 30,	Instruction	Student Services	Instructional Staff	District Leadership	School Leadership	Business	Operation & Maintenance	Transportation	Debt Service	Total
2021	\$ 3,315,168	\$ 137,417	\$ 95,087	\$ 570,175	\$ 275,592	\$ 85,891	\$ 630,630	\$ 280,334	\$ 3,727	\$ 5,394,021
2020	\$ 3,007,665	\$ 119,829	\$ 17,450	\$ 528,883	\$ 263,727	\$ 93,411	\$ 578,872	\$ 227,868	\$ 3,727	\$ 4,841,432
2019	\$ 3,050,482	\$ 97,118	\$ 4,250	\$ 550,374	\$ 229,511	\$ 92,588	\$ 574,453	\$ 280,797	\$ 3,727	\$ 4,883,300
2018	\$ 3,075,336	\$ 0	\$ 19,624	\$ 513,609	\$ 159,967	\$ 73,799	\$ 538,068	\$ 264,888	\$ 21,226	\$ 4,666,517
2017	\$ 3,015,136	\$ 0	\$ 19,692	\$ 440,329	\$ 211,344	\$ 107,299	\$ 519,301	\$ 271,443	\$ 21,536	\$ 4,606,080
2016	\$ 2,933,507	\$ 0	\$ 20,325	\$ 463,883	\$ 194,723	\$ 102,818	\$ 527,203	\$ 243,512	\$ 23,328	\$ 4,509,299
2015	\$ 2,841,536	\$ 0	\$ 20,979	\$ 434,397	\$ 227,914	\$ 112,407	\$ 505,903	\$ 280,324	\$ 42,142	\$ 4,465,602
2014	\$ 2,434,156	\$ 0	\$ 9,977	\$ 401,456	\$ 209,856	\$ 112,133	\$ 507,606	\$ 284,941	\$ 38,506	\$ 3,998,631
2013	\$ 2,365,195	\$ 0	\$ 15,248	\$ 355,385	\$ 201,530	\$ 93,566	\$ 405,854	\$ 395,998	\$ 18,930	\$ 3,851,706
2012	\$ 2,545,200	\$ 0	\$ 21,048	\$ 295,591	\$ 121,602	\$ 101,150	\$ 542,257	\$ 279,579	\$ 18,264	\$ 3,924,691
2011	\$ 2,561,355	\$ 0	\$ 25,191	\$ 244,736	\$ 121,832	\$ 94,197	\$ 433,717	\$ 278,443	\$ 36,446	\$ 3,795,917

Fiscal Year Ended June 30,	Instruction	Student Services	Instructional Staff	District Leadership	School Leadership	Business	Operation & Maintenance	Transportation	Debt Service	Total
2021	61.5%	2.5%	1.8%	10.6%	5.1%	1.6%	11.7%	5.2%	0.1%	100.0%
2020	62.1%	2.5%	0.4%	10.9%	5.4%	1.9%	12.0%	4.7%	0.1%	100.0%
2019	62.5%	2.0%	0.1%	11.3%	4.7%	1.9%	11.8%	5.8%	0.1%	100.0%
2018	65.9%	0.0%	0.4%	11.0%	3.4%	1.6%	11.5%	5.7%	0.5%	100.0%
2017	65.5%	0.0%	0.4%	9.6%	4.6%	2.3%	11.3%	5.9%	0.5%	100.0%
2016	65.1%	0.0%	0.5%	10.3%	4.3%	2.3%	11.7%	5.4%	0.5%	100.0%
2015	63.6%	0.0%	0.5%	9.7%	5.1%	2.5%	11.3%	6.3%	0.9%	100.0%
2014	60.9%	0.0%	0.2%	10.0%	5.2%	2.8%	12.7%	7.1%	1.0%	100.0%
2013	61.4%	0.0%	0.4%	9.2%	5.2%	2.4%	10.5%	10.3%	0.5%	100.0%
2012	64.9%	0.0%	0.5%	7.5%	3.1%	2.6%	13.8%	7.1%	0.5%	100.0%
2011	67.5%	0.0%	0.7%	6.4%	3.2%	2.5%	11.4%	7.3%	1.0%	100.0%

Source: District Data

Piute County School District
Property Taxes (Per \$1) - Direct and Overlapping Governments
Last Ten Tax (Calendar) Years

Calendar Tax Year	2020	2019	2018	2017	2016	2015	2014	2013	2012*	2011	2010
Fiscal Year	2020 - 21	2019 - 20	2018 - 19	2017 - 18	2016 - 17	2015 - 16	2014 - 15	2013 - 14	2012 - 13	2011 - 12	2010 - 11
School District Rates:											
Basic School Levy ⁽¹⁾	0.001628	0.001661	0.001666	0.001568	0.001675	0.001736	0.001419	0.001535	0.001651	0.001591	0.001495
Voted Local Levy ⁽²⁾	0.000400	0.000400	0.000400	0.000400	0.000295	0.000292	0.000299	0.000307	0.000303	0.000300	0.000301
Board Local Levy ⁽³⁾	0.001600	0.001600	0.001600	0.001605	0.001740	0.001724	0.001770	0.001840	0.001819		
K-3 Reading Levy										0.000109	0.000109
Transportation Levy										0.000286	0.000288
Capital Local Levy ⁽⁴⁾	0.000082	0.000103	0.000122	0.000165	0.000167	0.000164	0.000165	0.000169	0.000163	0.000160	0.000352
10% of Basic Levy										0.001107	0.000918
Debt Service Levy ⁽⁵⁾	0.001265	0.001468	0.001716	0.001950	0.002426	0.002371	0.002600	0.002800	0.002800	0.002824	0.003121
Charter Levy	0.000005	0.000003									
Total District Rates	0.004980	0.005235	0.005504	0.005688	0.006303	0.006287	0.006253	0.006651	0.006736	0.006377	0.006584
Overlapping Rates:											
Piute County	0.003356	0.003480	0.003586	0.003666	0.003722	0.003637	0.003740	0.003827	0.003821	0.003796	0.003675
Circleville Town	0.002173	0.002307	0.002361	0.002425	0.002432	0.002432	0.002062	0.002023	0.002034	0.002041	0.002144
Junction Town	0.001856	0.002061	0.002037	0.002152	0.002041	0.002041	0.001985	0.002010	0.002004	0.002046	0.002026
Kingston Town	0.001176	0.001202	0.001234	0.001248	0.001369	0.001369	0.001382	0.001389	0.001393	0.001488	0.001493
Marysvale Town	0.001746	0.001726	0.001961	0.001959	0.001988	0.001988	0.002009	0.002024	0.002032	0.000617	0.000606
Water Conservancy	0.000187	0.000191	0.000192	0.000192	0.000193	0.000197	0.000034	0.000035	0.000035	0.000035	0.000033

Limitations per Utah State Statute:

(1) Rate Established Annually by the Utah State Legislature and the Utah State Tax Commission

(2) Maximum Rate is 0.001600 and Must be Voted on by Public

(3) Maximum Rate is 0.002500

(4) Maximum Rate is 0.003000

(5) No Maximum Rate, But Must Have Votor Approval for General Obligation Bonds Issued

** Tax rates were consolidated by Utah law for the 2012 tax year. The K-3 Reading, Transportation, Tort Liability, and 10% of Basic levies were rolled into the Board Local Levy.*

The tax rates shown on this table represent the tax rates that are effective for each entity on the date the taxes are due to the County, which is 11/30 of each year

Source: Utah State Tax Commission, Property Tax Division

This Page Left Intentionally Blank



PIUTE COUNTY SCHOOL DISTRICT
PREPARING CHILDREN FOR THE FUTURE

Compliance Section

Pages 72 - 75

Independent Auditors Report

Internal Control Over Financial Reporting And On Other Matters72

Independent auditor's report on internal control over financial reporting and on compliance and other matters based on an audit of financial statements performed in accordance with government auditing standards.

Compliance With General State Compliance Requirements.....74

Independent auditor's report as required by the *State Compliance Audit Guide* on: Compliance with general state compliance requirements and internal control over compliance.



GILBERT & STEWART

CERTIFIED PUBLIC ACCOUNTANTS
A PROFESSIONAL CORPORATION
ESTABLISHED 1974

RANDELA HEATON, CPA
LYNN A. GILBERT, CPA
JAMES A. GILBERT, CPA
BEN H. PROBST, CPA
RONALD J. STEWART, CPA
SIDNEY S. GILBERT, CPA
JAMES E. STEWART, CPA

INDEPENDENT AUDITOR'S REPORT ON INTERNAL CONTROL OVER FINANCIAL REPORTING AND ON COMPLIANCE AND OTHER MATTERS BASED ON AN AUDIT OF FINANCIAL STATEMENTS PERFORMED IN ACCORDANCE WITH GOVERNMENT AUDITING STANDARDS

Board of Education
Piute County School District
Junction, Utah

We have audited, in accordance with the auditing standards generally accepted in the United States of America and the standards applicable to financial audits contained in *Government Auditing Standards* issued by the Comptroller General of the United States, the financial statements of the governmental activities, each major fund, and the aggregate remaining fund information of Piute County School District, as of and for the year ended June 30, 2021, and the related notes to the financial statements, which collectively comprise Piute County School District's basic financial statements, and have issued our report thereon dated November 23, 2021.

Internal Control Over Financial Reporting

In planning and performing our audit of the financial statements, we considered Piute County School District's internal control over financial reporting (internal control) to determine the audit procedures that are appropriate in the circumstances for the purpose of expressing our opinions on the financial statements, but not for the purpose of expressing an opinion on the effectiveness of Piute County School District's internal control. Accordingly, we do not express an opinion on the effectiveness of Piute County School District's internal control.

A *deficiency in internal control* exists when the design or operation of a control does not allow management or employees, in the normal course of performing their assigned functions, to prevent, or detect and correct, misstatements on a timely basis. A *material weakness* is a deficiency, or a combination of deficiencies, in internal control, such that there is a reasonable possibility that a material misstatement of the entity's financial statements will not be prevented, or detected and corrected, on a timely basis. A *significant deficiency* is a deficiency, or a combination of deficiencies, in internal control that is less severe than a material weakness, yet important enough to merit attention by those charged with governance.

Our consideration of internal control was for the limited purpose described in the first paragraph of this section and was not designed to identify all deficiencies in internal control that might be material weaknesses or significant deficiencies. Given these limitations, during our audit we did not identify any deficiencies in internal control that we consider to be material weaknesses. However, material weaknesses may exist that have not been identified.

Compliance and Other Matters

As part of obtaining reasonable assurance about whether Piute County School District's financial statements are free from material misstatement, we performed tests of its compliance with certain provisions of laws, regulations, contracts, and grant agreements, noncompliance with which could have a direct and

material effect on the determination of financial statement amounts. However, providing an opinion on compliance with those provisions was not an objective of our audit, and accordingly, we do not express such an opinion. The results of our tests disclosed no instances of noncompliance or other matters that are required to be reported under *Government Auditing Standards*.

Purpose of this Report

The purpose of this report is solely to describe the scope of our testing of internal control and compliance and the results of that testing, and not to provide an opinion on the effectiveness on the entity's internal control or on compliance. This report is an integral part of an audit performed in accordance with *Government Auditing Standards* in considering the entity's internal control and compliance. Accordingly, this communication is not suitable for any other purpose.

Gilbert & Stewart

GILBERT & STEWART
Certified Public Accountants
November 23, 2021



**INDEPENDENT AUDITOR'S REPORT ON COMPLIANCE AND
 INTERNAL CONTROL OVER COMPLIANCE
 AS REQUIRED BY THE STATE COMPLIANCE AUDIT GUIDE**

Board of Education
 Piute County School District
 Junction, Utah

Report on Compliance

We have audited Piute County School District's compliance with the applicable state compliance requirements described in the *State Compliance Audit Guide*, issued by the Office of the Utah State Auditor that could have a direct and material effect on Piute County School District for the year ended June 30, 2021.

State compliance requirements were tested for the year ended June 30, 2021 in the following areas:

- Budgetary Compliance
- Fund Balance
- Fraud Risk Assessment
- School District Tax Levies
- School Fees
- Government Fees
- Treasurer's Bond
- Cash Management
- Minimum School Program – Unrestricted Programs
- Minimum School Program – Restricted Programs: Special Education and Student Success Act

Management's Responsibility

Management is responsible for compliance with the state requirements referred to above.

Auditor's Responsibility

Our responsibility is to express an opinion on Piute County School District's compliance based on our audit of the compliance requirements referred to above. We conducted our audit of compliance in accordance with auditing standards generally accepted in the United States of America; the standards applicable to financial audits contained in *Government Auditing Standards* issued by the Comptroller General of the United States; and the *State Compliance Audit Guide*. Those standards and the *State Compliance Audit Guide* require that we plan and perform the audit to obtain reasonable assurance about whether noncompliance with the compliance requirements referred to above that could have a direct and material effect on Piute County School District occurred. An audit includes examining, on a test basis, evidence about Piute County School District's compliance with those requirements and performing such other procedures as we considered necessary in the circumstances.

We believe that our audit provides a reasonable basis for our opinion on compliance with general state compliance requirements. However, our audit does not provide a legal determination of Piute County School District's compliance with those requirements.

Opinion Compliance

In our opinion, Piute County School District complied, in all material respects, with the compliance requirements referred to above for the year ended June 30, 2021.

Report on Internal Control Over Compliance

Management of Piute County School District is responsible for establishing and maintaining effective internal control over compliance with the compliance requirements referred to above. In planning and performing our audit of compliance, we considered Piute County School District's internal control over compliance with the compliance requirements that could have a direct and material effect on Piute County School District to determine the auditing procedures that are appropriate in the circumstances for the purpose of expressing an opinion on compliance with general state compliance requirements and to test and report on internal control over compliance in accordance with the *State Compliance Audit Guide*, but not for the purpose of expressing an opinion on the effectiveness of internal control over compliance. Accordingly, we do not express an opinion on the effectiveness of Piute County School District's internal control over compliance.

A deficiency in internal control over compliance exists when the design or operation of a control over compliance does not allow management or employees, in the normal course of performing their assigned functions, to prevent, or detect and correct, noncompliance with a general state compliance requirement on a timely basis. *A material weakness in internal control over compliance* is a deficiency, or combination of deficiencies, in internal control over compliance, such that there is a reasonable possibility that material noncompliance with a general state compliance requirement will not be prevented, or detected and corrected, on a timely basis. *A significant deficiency in internal control over compliance* is a deficiency, or a combination of deficiencies, in internal control over compliance with a general state compliance requirement that is less severe than a material weakness in internal control over compliance, yet important enough to merit attention by those charged with governance.

Our consideration of internal control over compliance was for the limited purpose described in the first paragraph of this section and was not designed to identify all deficiencies in internal control over compliance that might be material weaknesses or significant deficiencies. We did not identify any deficiencies in internal control over compliance that we consider to be material weaknesses. However, material weaknesses may exist that have not been identified.

The purpose of this report on internal control over compliance is solely to describe the scope of our testing of internal control and compliance and the results of that testing based on the requirements of the *State Compliance Audit Guide*. Accordingly, this report is not suitable for any other purpose.

Gilbert & Stewart

GILBERT & STEWART
Certified Public Accountants
November 23, 2021